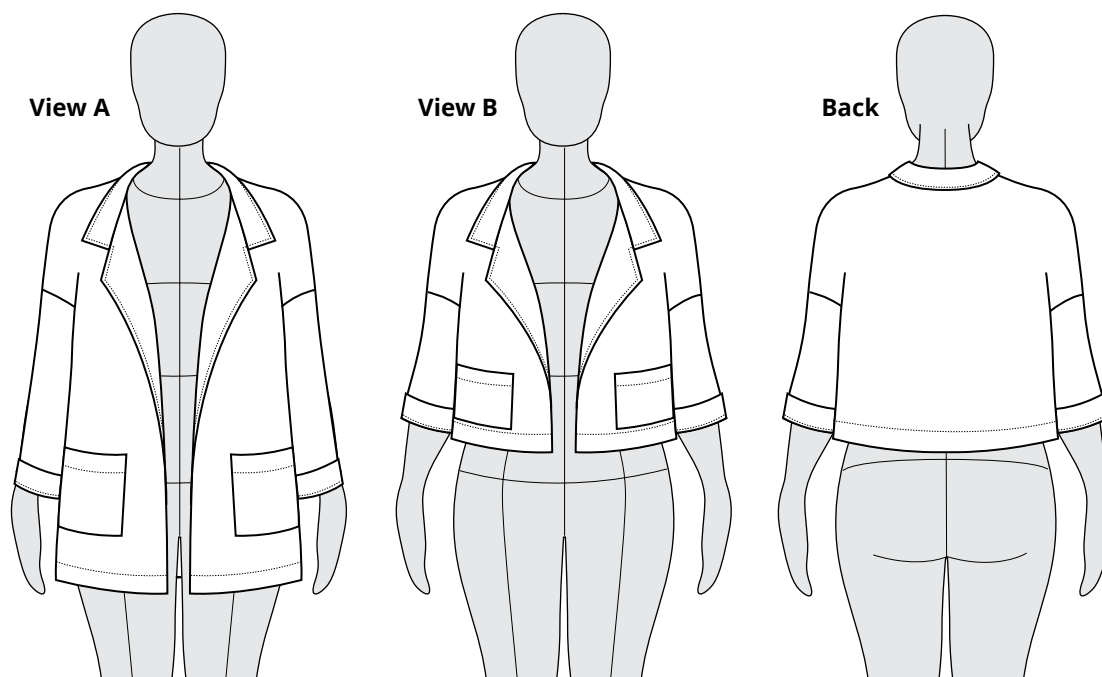


PONA

JACKET | ADVANCED BEGINNER | SIZES 0-30 US | #6001



HELEN'S CLOSET
PATTERNS



The Pona Jacket is a modern outer layer that is easy to make and style. An extra-wide facing allows this unlined jacket to drape open in the front, no closures necessary! Pona has an oversized blazer feel, complete with pockets and a statement lapel. Make a modern, cropped Pona in linen for warmer weather or a longer jacket in wool for fall and winter. Pona is a perfect beginner jacket pattern!

Notions

- Thread
- 30" x 13" (76 cm x 33 cm) of lightweight fusible interfacing

Sizes

0 - 30 US

Difficulty

Advanced Beginner

Sewing Skills Learned

- Sewing a collar
- Interfacing
- Topstitching

Fabric Recommendations

Light to medium weight fabrics with no stretch, such as mid-weight linen or cotton, corduroy, and wool. Pona can be made in a lighter-weight, drapery fabric such as Tencel twill for a more fluid look.



Size Chart

inches

	0	2	4	6	8	10	12	14
High Bust	29	30	31	32	33	34.5	36	38
Full Bust	31	32	33	34	35	36.5	38	40
Waist	24	25	26	27	28	29	30	32
Hips	33	34	35	36	37	38.5	40	42

	16	18	20	22	24	26	28	30
High Bust	40	42	44	46	48	50	52	54
Full Bust	42	44	46	48	50	52	54	56
Waist	34	36	38	40	42	44	46	48
Hips	44	46	48	50	52	54	56	58

centimeters

	0	2	4	6	8	10	12	14
High Bust	73.5	76	78.5	81.5	84	87.5	91.5	96.5
Full Bust	78.5	81.5	84	86.5	89	92.5	96.5	101.5
Waist	61	63.5	66	68.5	71	73.5	76	81.5
Hips	84	86.5	89	91.5	94	98	101.5	106.5

	16	18	20	22	24	26	28	30
High Bust	101.5	106.5	112	117	122	127	132	137
Full Bust	106.5	112	117	122	127	132	137	142
Waist	86.5	91.5	96.5	101.5	106.5	112	117	122
Hips	112	117	122	127	132	137	142	147.5

This pattern has been drafted for a 5'6" tall woman.

Choosing a size.

The Pona Jacket is oversized and it is not designed to close in the front. We recommend that you **choose a size based on your high bust measurement and make that straight size.** If you are between sizes, size down.

	16	18	20	22	24	26	28	30
High Bust	40	42	44	46	48	50	52	54
Full Bust	42	44	46	48	50	52	54	56
Waist	34	36	38	40	42	44	46	48
Hips	44	46	48	50	52	54	56	58

In this example, this person would make a size 16.



Finished Garment Measurements

inches

	0	2	4	6	8	10	12	14	16	18	20	22	24	26	28	30
Bust	40	40.5	41	41.5	42	44	46	48	50	52	54	56	58	60	62	64
Waist	40	40.5	41	41.5	42	44	46	48	50	52	54	56	58	60	62	64
Hips	40	40.5	41	41.5	42	44	46	48	50	52	54	56	58	60	62	64
Length (A)	30.5	30.7	30.9	31.1	31.3	31.5	31.7	31.9	32.1	32.3	32.5	32.7	32.9	33.1	33.3	33.5
Length (B)	20.5	20.7	20.9	21.1	21.3	21.5	21.7	21.9	22.1	22.3	22.5	22.7	22.9	23.1	23.3	23.5

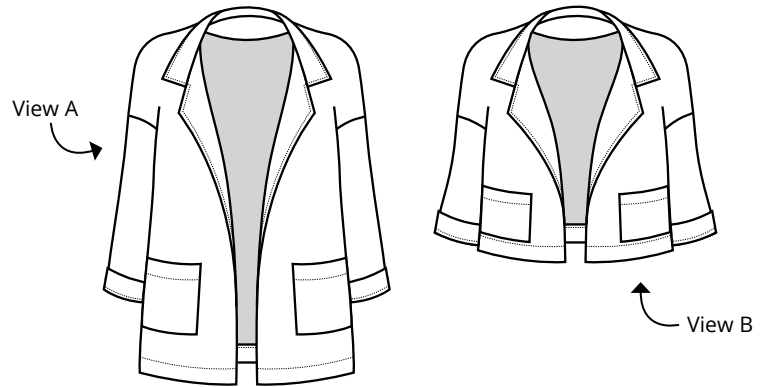
centimeters

	0	2	4	6	8	10	12	14	16	18	20	22	24	26	28	30
Bust	102	103	104	106	107	112	117	122	127	132	137	142	148	153	158	163
Waist	102	103	104	106	107	112	117	122	127	132	137	142	148	153	158	163
Hips	102	103	104	106	107	112	117	122	127	132	137	142	148	153	158	163
Length (A)	77.5	78	78.5	79	79.5	80	80.5	81	81.5	82	82.5	83	83.5	84	84.5	85
Length (B)	52	52.5	53	53.5	54	54.5	55	55.5	56	56.5	57	57.5	58	58.5	59	59.5



Fabric Requirements

Please allow extra fabric for napped or directional prints.



View A (longer jacket)

yards

	0	2	4	6	8	10	12	14	16	18	20	22	24	26	28	30
57" wide	3.3	3.3	3.3	3.3	3.3	3.3	3.3	3.3	3.3	3.3	3.3	3.3	3.3	3.3	3.3	3.3
45" wide	4.5	4.5	4.5	4.5	4.5	4.5	4.5	4.5	4.5	4.5	4.5	4.5	4.5	4.5	4.5	4.5

meters

	0	2	4	6	8	10	12	14	16	18	20	22	24	26	28	30
150 cm wide	3	3	3	3	3	3	3	3	3	3	3	3	3	3	3	3
115 cm wide	4	4	4	4	4	4	4	4	4	4	4	4	4	4	4	4

View B (shorter jacket)

yards

	0	2	4	6	8	10	12	14	16	18	20	22	24	26	28	30
57" wide	2.2	2.2	2.4	2.4	2.4	2.4	2.4	2.4	2.4	2.4	2.4	2.7	2.7	2.7	2.7	2.7
45" wide	3.3	3.3	3.3	3.3	3.3	3.3	3.3	3.3	3.3	3.3	3.3	3.3	3.3	3.5	3.5	3.5

meters

	0	2	4	6	8	10	12	14	16	18	20	22	24	26	28	30
150 cm wide	2	2	2.2	2.2	2.2	2.2	2.2	2.2	2.2	2.2	2.2	2.5	2.5	2.5	2.5	2.5
115 cm wide	3	3	3	3	3	3	3	3	3	3	3	3	3	3.2	3.2	3.2

