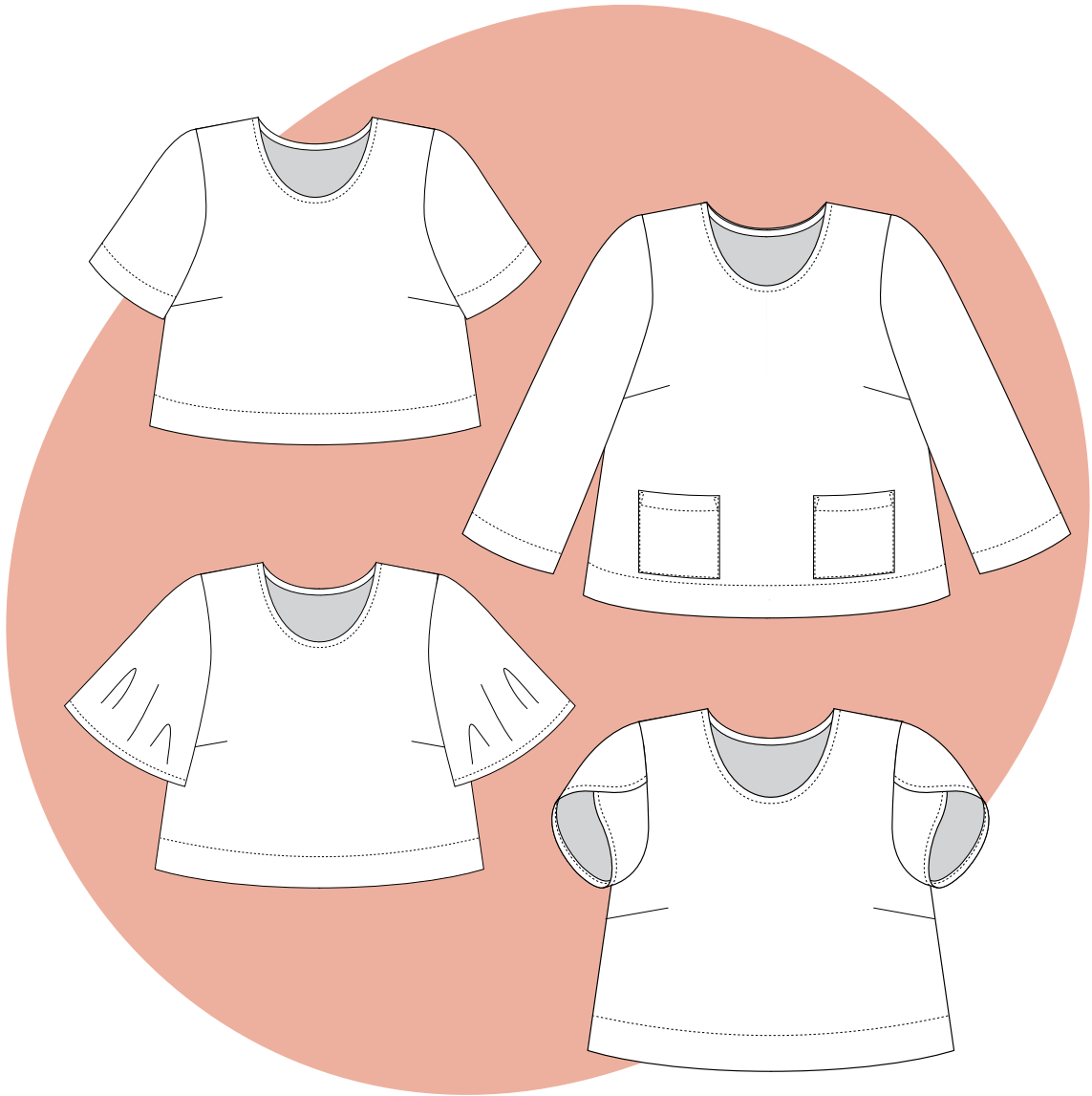
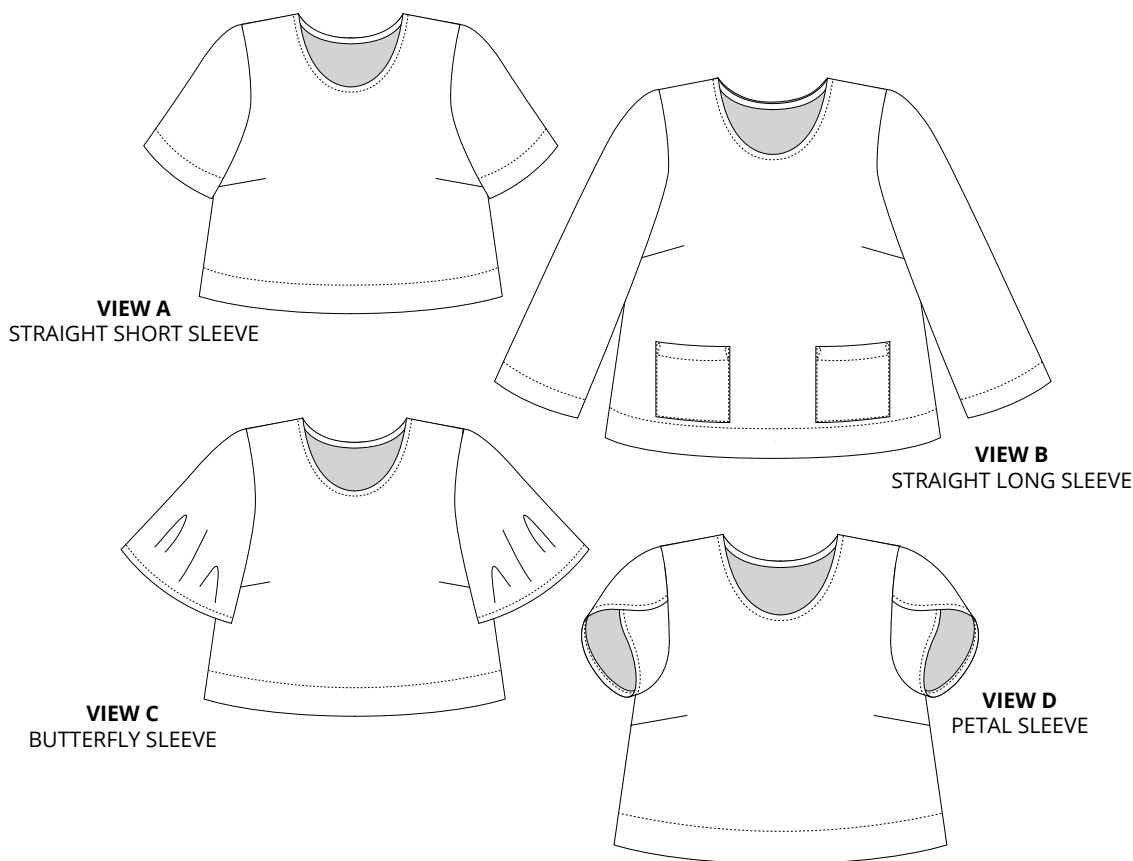


SLEEVE EXPANSION PACK

ASHTON TOP SLEEVES | ADVANCED BEGINNER | SIZES 0 - 30 | #4001A



HELEN'S CLOSET
PATTERNS



Transform your favourite shell tank into a fabulous sleeved top with this expansion pack! Four sleeve options are provided, including a straight short or long sleeve that can be cuffed to suit your style, a butterfly sleeve, and a petal sleeve. This expansion pack also includes a new shoulder and arm opening for the Ashton Top so you get a great fit in the shoulders. Plus there is a patch pocket so you can add front pockets to your Ashton Top too! The possibilities are endless.

Notions

• Thread

Difficulty

Advanced Beginner

Sizes

0-30 US

Skills Learned

Setting in a sleeve

Fabric Recommendations

The Ashton Top with sleeves can be made in a wide variety of woven fabrics. Try light to medium-weight cotton or linen for a structured look. Silk crêpe de chine, Tencel twill, or rayon challis will result in an Ashton with more fluidity. View C (butterfly sleeve) works best in fabrics with good drape.



About Helen's Closet Patterns Sizing

Two PDF patterns are provided with different size charts. The first is range 0-22 based on a B-cup block. The second is range 12-30 based on a D-cup block. There is an overlap from sizes 12-22 where you can choose which size range you would like to use.

B-Cup Size Range: (0-22)

inches

| | 0 | 2 | 4 | 6 | 8 | 10 | 12 | 14 | 16 | 18 | 20 | 22 |
|------------------|----|----|----|----|----|------|----|----|----|----|----|----|
| High Bust | 29 | 30 | 31 | 32 | 33 | 34.5 | 36 | 38 | 40 | 42 | 44 | 46 |
| Full Bust | 31 | 32 | 33 | 34 | 35 | 36.5 | 38 | 40 | 42 | 44 | 46 | 48 |
| Waist | 24 | 25 | 26 | 27 | 28 | 29 | 30 | 32 | 34 | 36 | 38 | 40 |
| Hips | 33 | 34 | 35 | 36 | 37 | 38.5 | 40 | 42 | 44 | 46 | 48 | 50 |

centimeters

| | 0 | 2 | 4 | 6 | 8 | 10 | 12 | 14 | 16 | 18 | 20 | 22 |
|------------------|------|------|------|------|----|------|-------|-------|-------|-------|------|-------|
| High Bust | 73.5 | 76 | 78.5 | 81.5 | 84 | 87.5 | 91.5 | 96.5 | 101.5 | 106.5 | 112 | 117 |
| Full Bust | 78.5 | 81.5 | 84 | 86.5 | 89 | 92.5 | 96.5 | 101.5 | 106.5 | 112 | 117 | 122 |
| Waist | 61 | 63.5 | 66 | 68.5 | 71 | 73.5 | 76 | 81.5 | 86.5 | 91.5 | 96.5 | 101.5 |
| Hips | 84 | 86.5 | 89 | 91.5 | 94 | 98 | 101.5 | 106.5 | 112 | 117 | 122 | 127 |

D-Cup Size Range: (12-30)

inches

| | 12 | 14 | 16 | 18 | 20 | 22 | 24 | 26 | 28 | 30 |
|------------------|----|----|----|----|----|----|----|----|----|----|
| High Bust | 36 | 38 | 40 | 42 | 44 | 46 | 48 | 50 | 52 | 54 |
| Full Bust | 40 | 42 | 44 | 46 | 48 | 50 | 52 | 54 | 56 | 58 |
| Waist | 30 | 32 | 34 | 36 | 38 | 40 | 42 | 44 | 46 | 48 |
| Hips | 40 | 42 | 44 | 46 | 48 | 50 | 52 | 54 | 56 | 58 |

centimeters

| | 12 | 14 | 16 | 18 | 20 | 22 | 24 | 26 | 28 | 30 |
|------------------|-------|-------|-------|-------|------|-------|-------|-----|-----|-------|
| High Bust | 91.5 | 96.5 | 101.5 | 106.5 | 112 | 117 | 122 | 127 | 132 | 137 |
| Full Bust | 101.5 | 106.5 | 112 | 117 | 122 | 127 | 132 | 137 | 142 | 147.5 |
| Waist | 76 | 81.5 | 86.5 | 91.5 | 96.5 | 101.5 | 106.5 | 112 | 117 | 122 |
| Hips | 101.5 | 106.5 | 112 | 117 | 122 | 127 | 132 | 137 | 142 | 147.5 |

This pattern has been drafted for a 5'6" (168 cm) tall person.



inches

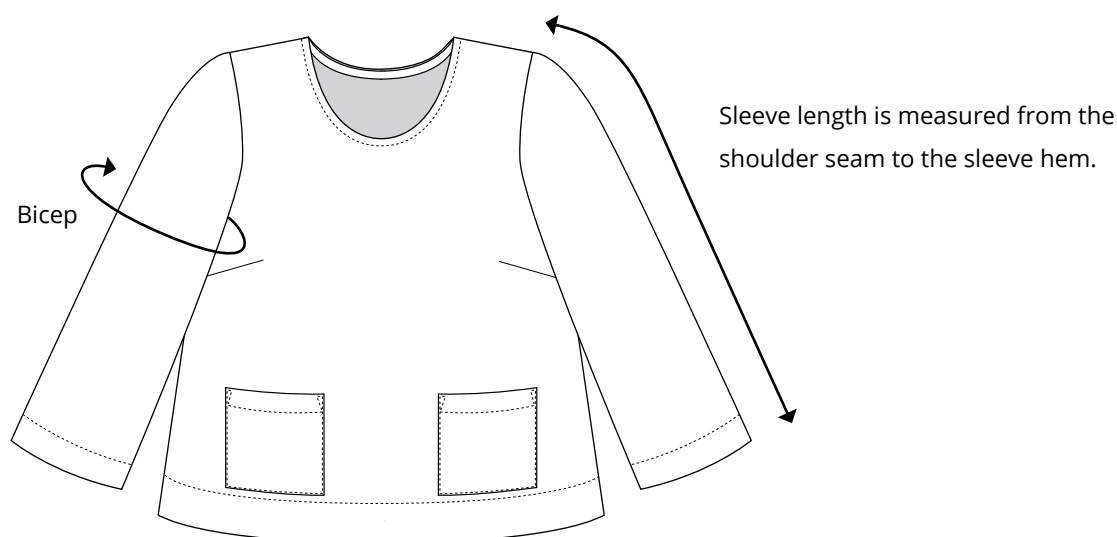
| | 0 | 2 | 4 | 6 | 8 | 10 | 12 | 14 | 16 | 18 | 20 | 22 | 24 | 26 | 28 | 30 | |
|------------------------------|-----|------|------|------|------|------|------|------|------|------|------|------|------|------|------|------|--|
| B-cup bicep views A/B | 12 | 12.7 | 13.3 | 14 | 14.5 | 15.3 | 16.3 | 17 | 18 | 19 | 20 | 21 | | | | | |
| D-cup bicep views A/B | | | | | | | 15.2 | 15.8 | 16.4 | 17.5 | 18.5 | 19.5 | 20.5 | 21.8 | 22.8 | 24 | |
| Sleeve length view A | 8.5 | 8.7 | 8.9 | 9.1 | 9.3 | 9.5 | 9.6 | 9.7 | 9.8 | 9.9 | 10 | 10.2 | 10.5 | 10.8 | 11 | 11.3 | |
| Sleeve length view B | 20 | 20.2 | 20.4 | 20.6 | 20.8 | 21 | 21.2 | 21.4 | 21.5 | 21.6 | 21.8 | 22 | 22.2 | 22.4 | 22.5 | 22.6 | |
| Sleeve length view C | 9 | 9.2 | 9.3 | 9.5 | 9.6 | 9.7 | 9.9 | 10 | 10.2 | 10.3 | 10.4 | 10.5 | 11 | 11.5 | 12 | 12.5 | |
| Sleeve length view D | 4.5 | 4.7 | 4.9 | 5.1 | 5.3 | 5.5 | 5.7 | 5.9 | 6.1 | 6.2 | 6.4 | 6.5 | 6.6 | 6.7 | 6.8 | 7 | |

centimeters

| | 0 | 2 | 4 | 6 | 8 | 10 | 12 | 14 | 16 | 18 | 20 | 22 | 24 | 26 | 28 | 30 |
|------------------------------|------|------|------|------|------|------|------|------|------|------|------|------|------|------|------|------|
| B-cup bicep views A/B | 30.5 | 32.5 | 34 | 35.5 | 37 | 39 | 41.5 | 43 | 45.5 | 48.5 | 51 | 53.5 | | | | |
| D-cup bicep views A/B | | | | | | | 38.5 | 40 | 41.5 | 44.5 | 47 | 49.5 | 52 | 55.5 | 58 | 61 |
| Sleeve length view A | 21.5 | 22 | 22.5 | 23 | 23.5 | 24 | 24.5 | 24.5 | 25 | 25 | 25.5 | 26 | 26.5 | 27.5 | 28 | 28.5 |
| Sleeve length view B | 51 | 51.5 | 52 | 52.5 | 53 | 53.5 | 54 | 54.5 | 54.5 | 55 | 55.5 | 56 | 56.5 | 57 | 57 | 57.5 |
| Sleeve length view C | 23 | 23.5 | 23.5 | 24 | 24.5 | 24.5 | 25 | 25.5 | 26 | 26 | 26.5 | 26.5 | 28 | 29 | 30.5 | 32 |
| Sleeve length view D | 11.5 | 12 | 12.5 | 13 | 13.5 | 14 | 14.5 | 15 | 15.5 | 15.5 | 16.5 | 16.5 | 17 | 17 | 17.5 | 18 |

Please see the Ashton Top pattern for more finished garment measurement details.

About the bicep measurement: the B-cup and D-cup bicep measurements differ between the overlapping sizes. This is because the patterns are drafted from separate blocks and have different arm openings, therefore slightly different bicep sizing.



Fabric requirements are the same whether you are using the B-cup size range or D-cup size range. Please allow extra fabric for napped or directional prints. Requirements listed here include the Ashton Top AND the sleeves.

Longer Ashton Top with long sleeves (expansion view B)

yards

| | 0 | 2 | 4 | 6 | 8 | 10 | 12 | 14 | 16 | 18 | 20 | 22 | 24 | 26 | 28 | 30 |
|-----------------|-----|-----|-----|-----|-----|-----|-----|-----|-----|-----|-----|-----|-----|-----|-----|-----|
| 57" wide | 1.6 | 1.6 | 1.6 | 1.6 | 1.6 | 1.6 | 2 | 2 | 2 | 2.4 | 2.4 | 2.5 | 2.6 | 2.6 | 2.7 | 2.7 |
| 45" wide | 1.6 | 1.6 | 2.2 | 2.2 | 2.2 | 2.2 | 2.2 | 2.2 | 2.2 | 2.7 | 3 | 3 | 3 | 3 | 3 | 3 |

meters

| | 0 | 2 | 4 | 6 | 8 | 10 | 12 | 14 | 16 | 18 | 20 | 22 | 24 | 26 | 28 | 30 |
|--------------------|-----|-----|-----|-----|-----|-----|-----|-----|-----|-----|-----|-----|-----|-----|-----|-----|
| 150 cm wide | 1.5 | 1.5 | 1.5 | 1.5 | 1.5 | 1.5 | 1.8 | 1.8 | 1.8 | 2.2 | 2.2 | 2.3 | 2.4 | 2.4 | 2.5 | 2.5 |
| 115 cm wide | 1.5 | 1.5 | 2 | 2 | 2 | 2 | 2 | 2 | 2 | 2.5 | 2.7 | 2.7 | 2.7 | 2.7 | 2.7 | 2.7 |

Cropped Ashton Top with long sleeves (expansion view B)

yards

| | 0 | 2 | 4 | 6 | 8 | 10 | 12 | 14 | 16 | 18 | 20 | 22 | 24 | 26 | 28 | 30 |
|-----------------|-----|-----|-----|-----|-----|-----|-----|-----|-----|-----|-----|-----|-----|-----|-----|-----|
| 57" wide | 1.4 | 1.4 | 1.4 | 1.4 | 1.4 | 1.4 | 1.6 | 1.6 | 1.6 | 2.1 | 2.1 | 2.1 | 2.3 | 2.3 | 2.4 | 2.4 |
| 45" wide | 1.4 | 1.4 | 1.9 | 1.9 | 1.9 | 1.9 | 1.9 | 1.9 | 1.9 | 2.4 | 2.6 | 2.6 | 2.6 | 2.6 | 2.6 | 2.6 |

meters

| | 0 | 2 | 4 | 6 | 8 | 10 | 12 | 14 | 16 | 18 | 20 | 22 | 24 | 26 | 28 | 30 |
|--------------------|-----|-----|-----|-----|-----|-----|-----|-----|-----|-----|-----|-----|-----|-----|-----|-----|
| 150 cm wide | 1.3 | 1.3 | 1.3 | 1.3 | 1.3 | 1.3 | 1.5 | 1.5 | 1.5 | 1.9 | 1.9 | 1.9 | 2.1 | 2.1 | 2.2 | 2.2 |
| 115 cm wide | 1.3 | 1.3 | 1.7 | 1.7 | 1.7 | 1.7 | 1.7 | 1.7 | 1.7 | 2.2 | 2.4 | 2.4 | 2.4 | 2.4 | 2.4 | 2.4 |

Longer Ashton Top with short sleeves (expansion views A, C, D)

yards

| | 0 | 2 | 4 | 6 | 8 | 10 | 12 | 14 | 16 | 18 | 20 | 22 | 24 | 26 | 28 | 30 |
|-----------------|-----|-----|-----|-----|-----|-----|-----|-----|-----|-----|-----|-----|-----|-----|-----|-----|
| 57" wide | 1.4 | 1.4 | 1.4 | 1.4 | 1.4 | 1.5 | 1.5 | 1.5 | 1.6 | 2.2 | 2.2 | 2.2 | 2.2 | 2.2 | 2.2 | 2.2 |
| 45" wide | 1.4 | 1.4 | 1.4 | 1.6 | 1.6 | 1.6 | 2 | 2 | 2 | 2.4 | 2.4 | 2.4 | 2.4 | 2.4 | 2.4 | 2.4 |

meters

| | 0 | 2 | 4 | 6 | 8 | 10 | 12 | 14 | 16 | 18 | 20 | 22 | 24 | 26 | 28 | 30 |
|--------------------|-----|-----|-----|-----|-----|-----|-----|-----|-----|-----|-----|-----|-----|-----|-----|-----|
| 150 cm wide | 1.3 | 1.3 | 1.3 | 1.3 | 1.3 | 1.4 | 1.4 | 1.4 | 1.5 | 2 | 2 | 2 | 2 | 2 | 2 | 2 |
| 115 cm wide | 1.3 | 1.3 | 1.3 | 1.5 | 1.5 | 1.5 | 1.8 | 1.8 | 1.8 | 2.2 | 2.2 | 2.2 | 2.2 | 2.2 | 2.2 | 2.2 |

Cropped Ashton Top with short sleeves (expansion views B, C, D)

yards

| | 0 | 2 | 4 | 6 | 8 | 10 | 12 | 14 | 16 | 18 | 20 | 22 | 24 | 26 | 28 | 30 |
|-----------------|-----|-----|-----|-----|-----|-----|-----|-----|-----|-----|-----|-----|-----|-----|-----|-----|
| 57" wide | 1.1 | 1.1 | 1.1 | 1.1 | 1.1 | 1.2 | 1.2 | 1.2 | 1.3 | 1.9 | 1.9 | 1.9 | 1.9 | 1.9 | 1.9 | 1.9 |
| 45" wide | 1.1 | 1.1 | 1.1 | 1.3 | 1.3 | 1.3 | 1.6 | 1.6 | 1.6 | 2.2 | 2.2 | 2.2 | 2.2 | 2.2 | 2.2 | 2.2 |

meters

| | 0 | 2 | 4 | 6 | 8 | 10 | 12 | 14 | 16 | 18 | 20 | 22 | 24 | 26 | 28 | 30 |
|--------------------|---|---|---|-----|-----|-----|-----|-----|-----|-----|-----|-----|-----|-----|-----|-----|
| 150 cm wide | 1 | 1 | 1 | 1 | 1 | 1.1 | 1.1 | 1.1 | 1.2 | 1.7 | 1.7 | 1.7 | 1.7 | 1.7 | 1.7 | 1.7 |
| 115 cm wide | 1 | 1 | 1 | 1.2 | 1.2 | 1.2 | 1.5 | 1.5 | 1.5 | 2 | 2 | 2 | 2 | 2 | 2 | 2 |

