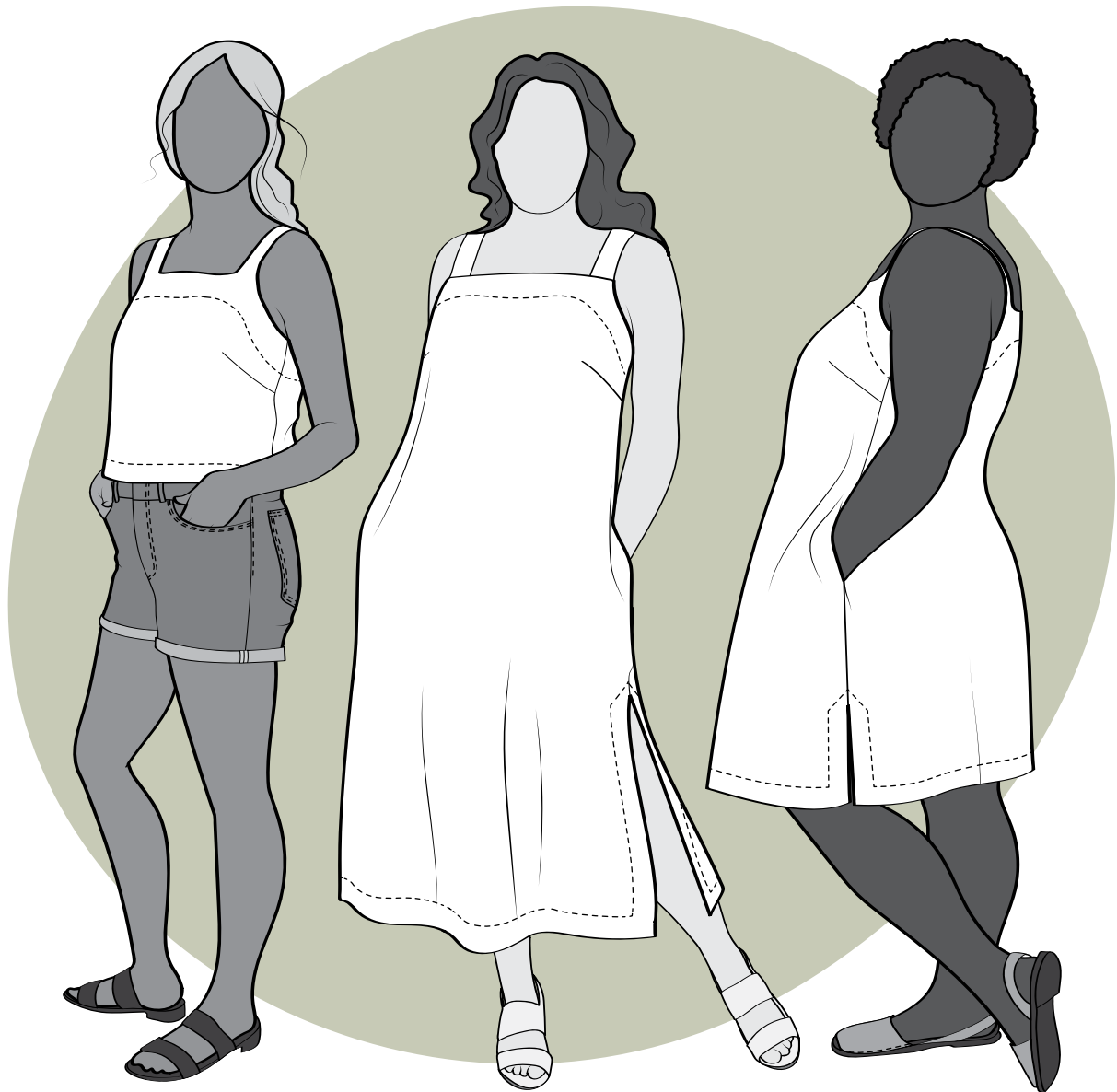


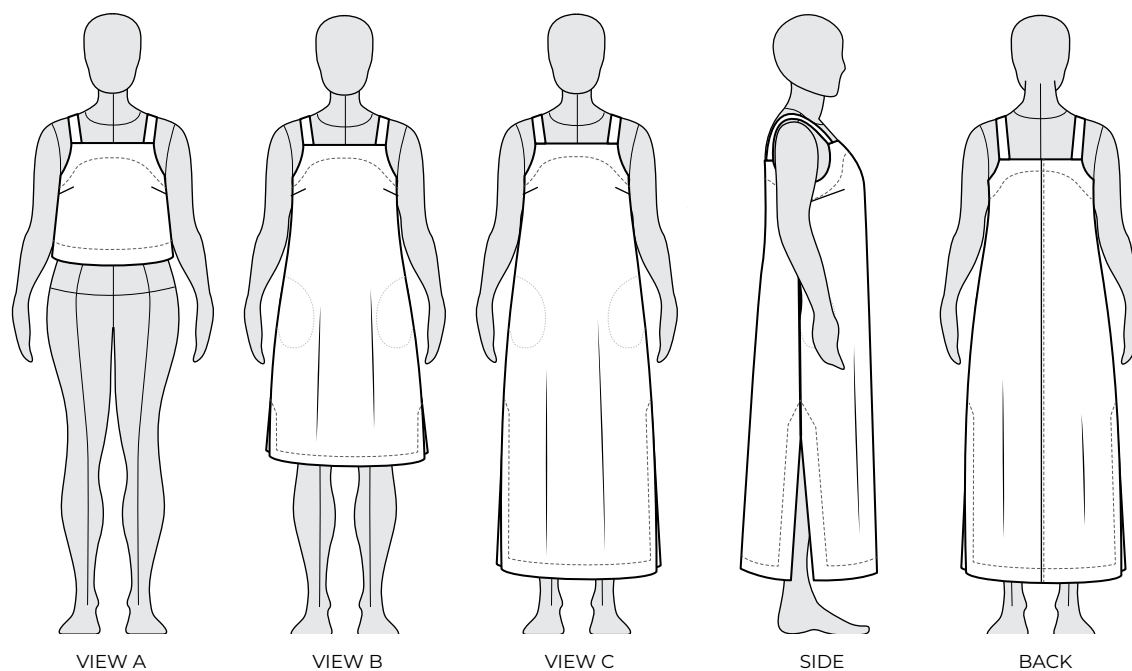
REYNOLDS

TOP AND DRESS | ADVANCED BEGINNER | SIZES 0 - 34 | #8003



HELEN'S CLOSET

PATTERNS



The Reynolds Top and Dress is your go-to summer garment! Throw this simple sundress on and you will instantly be in the mood for a relaxing garden stroll or a cold drink by the pool. Pair the Reynolds top with high-waisted bottoms or layer the dress over a simple knit tee. Reynolds features wide shoulder straps, bust darts, in-seam pockets, and a side slit with mitered corners at the hem. This is a pull-on-overhead design with shaping in the side and back seams. The top of the garment is finished with a topstitched facing.

Notions

- Thread
- Lightweight fusible interfacing
18" (50 cm) x 34" (90 cm)

Difficulty

Advanced beginner

Sizes

0-34 US

Sewing Skills Learned

- Facings
- In-seam pockets
- Mitered corners

Fabric Recommendations

Light to medium weight woven fabrics with no stretch. Linen, cotton (lawn, poplin, voile, seersucker, shirting, double gauze, crinkle cotton), Tencel twill, silk, and rayon/viscose challis or poplin will work well. Structured fabric like crisp cotton lawn will have more dramatic volume and drapier fabrics like rayon challis will have more fluid movement.



Two PDF patterns are provided with different size charts. The first is range 0-22 based on a B-cup block. The second is range 12-34 based on a D-cup block. There is an overlap from sizes 12-22 where you can choose which size range you would like to use.

B-Cup Size Range: (0 - 22)

inches

	0	2	4	6	8	10	12	14	16	18	20	22
High Bust/Chest	29	30	31	32	33	34.5	36	38	40	42	44	46
Full Bust/Chest	31	32	33	34	35	36.5	38	40	42	44	46	48
Waist	24	25	26	27	28	29	30	32	34	36	38	40
Hips	33	34	35	36	37	38.5	40	42	44	46	48	50

centimeters

	0	2	4	6	8	10	12	14	16	18	20	22
High Bust/Chest	73.5	76	78.5	81.5	84	87.5	91.5	96.5	101.5	106.5	112	117
Full Bust/Chest	78.5	81.5	84	86.5	89	92.5	96.5	101.5	106.5	112	117	122
Waist	61	63.5	66	68.5	71	73.5	76	81.5	86.5	91.5	96.5	101.5
Hips	84	86.5	89	91.5	94	98	101.5	106.5	112	117	122	127

D-Cup Size Range: (12 - 34)

inches

	12	14	16	18	20	22	24	26	28	30	32	34
High Bust/Chest	36	38	40	42	44	46	48	50	52	54	56	58
Full Bust/Chest	40	42	44	46	48	50	52	54	56	58	60	62
Waist	30	32	34	36	38	40	42	44	46	48	50	52
Hips	40	42	44	46	48	50	52	54	56	58	60	62

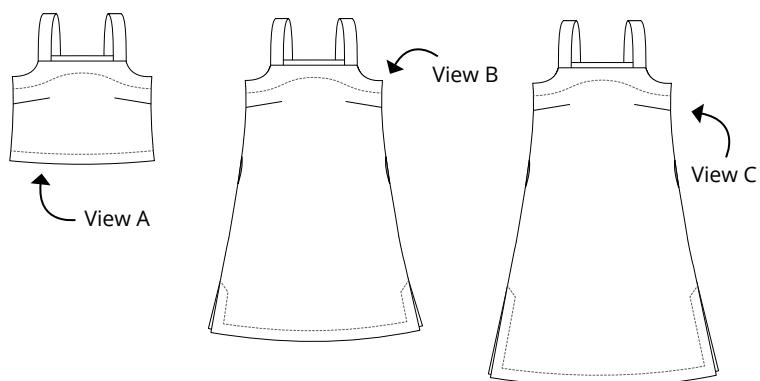
centimeters

	12	14	16	18	20	22	24	26	28	30	32	34
High Bust/Chest	91.5	96.5	101.5	106.5	112	117	122	127	132	137	142	147.5
Full Bust/Chest	101.5	106.5	112	117	122	127	132	137	142	147.5	152.5	157.5
Waist	76	81.5	86.5	91.5	96.5	101.5	106.5	112	117	122	127	132
Hips	101.5	106.5	112	117	122	127	132	137	142	147.5	152.5	157.5

This pattern has been drafted for a 5'6" (168 cm) tall person.



Please allow extra fabric for pattern/print matching with large scale prints.



View A (top)

yards

	0	2	4	6	8	10	12	14	16	18	20	22	24	26	28	30	32	34
57" wide	0.9	0.9	0.9	0.9	0.9	0.9	0.9	0.9	1.1	1.1	1.1	1.1	1.4	1.4	1.4	1.4	1.4	1.4
45" wide	1	1	1	1	1	1.1	1.1	1.1	1.4	1.4	1.4	1.4	1.5	1.5	1.5	1.5	1.5	1.5

meters

	0	2	4	6	8	10	12	14	16	18	20	22	24	26	28	30	32	34
145 cm wide	0.8	0.8	0.8	0.8	0.8	0.8	0.8	0.8	1	1	1	1	1.3	1.3	1.3	1.3	1.3	1.3
115 cm wide	0.9	0.9	0.9	0.9	0.9	1	1	1	1.3	1.3	1.3	1.3	1.4	1.4	1.4	1.4	1.4	1.4

View B (knee-length dress)

yards

	0	2	4	6	8	10	12	14	16	18	20	22	24	26	28	30	32	34
57" wide	1.6	1.6	1.6	1.6	1.6	1.8	1.8	1.8	2.6	2.6	2.6	2.6	2.7	2.7	2.7	2.7	2.7	2.7
45" wide	2.4	2.4	2.4	2.4	2.4	2.5	2.5	2.5	2.6	2.6	2.6	2.6	2.7	2.7	2.7	2.7	2.7	2.7

meters

	0	2	4	6	8	10	12	14	16	18	20	22	24	26	28	30	32	34
145 cm wide	1.5	1.5	1.5	1.5	1.5	1.6	1.6	1.6	2.4	2.4	2.4	2.4	2.5	2.5	2.5	2.5	2.5	2.5
115 cm wide	2.2	2.2	2.2	2.2	2.2	2.3	2.3	2.3	2.4	2.4	2.4	2.4	2.5	2.5	2.5	2.5	2.5	2.5

View C (long dress)

yards

	0	2	4	6	8	10	12	14	16	18	20	22	24	26	28	30	32	34
57" wide	2.2	2.2	2.2	2.2	2.2	2.6	2.6	2.6	2.8	2.8	2.8	2.8	3.3	3.3	3.3	3.3	3.3	3.3
45" wide	2.7	2.7	2.7	2.7	2.7	2.7	2.7	2.7	3.2	3.2	3.2	3.2	3.3	3.3	3.3	3.3	3.3	3.3

meters

	0	2	4	6	8	10	12	14	16	18	20	22	24	26	28	30	32	34
145 cm wide	2	2	2	2	2	2.4	2.4	2.4	2.6	2.6	2.6	2.6	3	3	3	3	3	3
115 cm wide	2.5	2.5	2.5	2.5	2.5	2.5	2.5	2.5	2.9	2.9	2.9	2.9	3	3	3	3	3	3



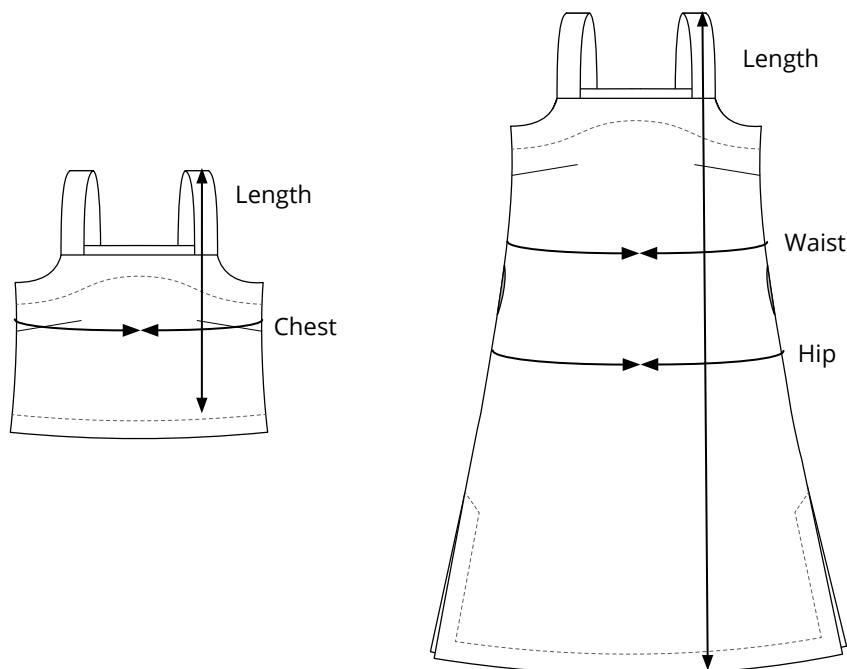
B-Cup Finished Measurements

	0	2	4	6	8	10	12	14	16	18	20	22
Full Bust/Chest	33	34	35	36	37	38.5	40	42	44	46	48	50
Waist	30.75	31.75	32.75	33.75	34.75	36.25	37.75	39.75	41.75	43.75	45.75	47.75
Hip	39.5	40.5	41.5	42.5	43.5	45	46.5	48.5	50.5	52.5	54.5	56.5
Length (A)	15.5	16	16.5	17	17	17.5	18	18	18.5	19	19.5	20
Length (B)	39	39	39.5	39.5	39.5	40	40	40	40	40	40.5	40.5
Length (C)	47	47	47.5	47.5	47.5	48	48	48	48	48.5	48.5	48.5

D-Cup Finished Measurements

	12	14	16	18	20	22	24	26	28	30	32	34
Full Bust/Chest	41.5	43.5	45.5	47.5	49.5	51.5	53.5	55.5	57.5	59.5	61.5	63.5
Waist	38.5	40.5	42.5	44.5	46.5	48.5	50.5	52.5	54.5	56.5	58.5	60.5
Hip	46.75	48.75	50.75	52.75	54.75	56.75	58.75	60.75	62.75	64.75	66.75	68.75
Length (A)	19	19	19	19.5	19.5	19.5	19.5	20	20	20	20	20.5
Length (B)	42	42.4	42.5	42.5	42.5	43	43	43	43	43.5	43.5	43.5
Length (C)	50	50	50.5	50.5	50.5	51	51	51	51	51.5	51.5	51.5

The **chest**, **waist** and **hips** are measured around the body of the garment around the chest, waist and hip respectively. The **length** is measured from the high shoulder to the hem.



B-Cup Finished Measurements

	0	2	4	6	8	10	12	14	16	18	20	22
Full Bust/Chest	84	86.5	89	91.5	94	98	101.5	107	112	117	122	127
Waist	78	80.5	83	85.5	88	92	96	101	106	111	116	121.5
Hip	100.5	103	105.5	108	110.5	114	118	123	128	133.5	138.5	143.5
Length (A)	40	41	42	43	44	45	45.5	46.5	47.5	48.5	49.5	50.5
Length (B)	99.5	100	100	100.5	100.5	101	101	101.5	101.5	102	102.5	103
Length (C)	120	120	120	120.5	121	121	121.5	122	122	122.5	123	123

D-Cup Finished Measurements

	12	14	16	18	20	22	24	26	28	30	32	34
Full Bust/Chest	105.5	110.5	115.5	121	126	131	136.5	141	146.5	151	156.5	161.5
Waist	97.5	102.5	107.5	112.5	117.5	123	128	133	138	143	148	153.5
Hip	118.5	123.5	129	134	139	144	149	154	159.5	164.5	169.5	174.5
Length (A)	48	48	48.5	49	49.5	49.5	50	50	50.5	51	51	51.5
Length (B)	107	107	107.5	108	108	108.5	109	109	109.5	110	110	110.5
Length (C)	127	127.5	128	128	128	128.5	129	129.5	130	130	130.5	140

The **chest**, **waist** and **hips** are measured around the body of the garment around the chest, waist and hip respectively. The **length** is measured from the high shoulder to the hem.

