

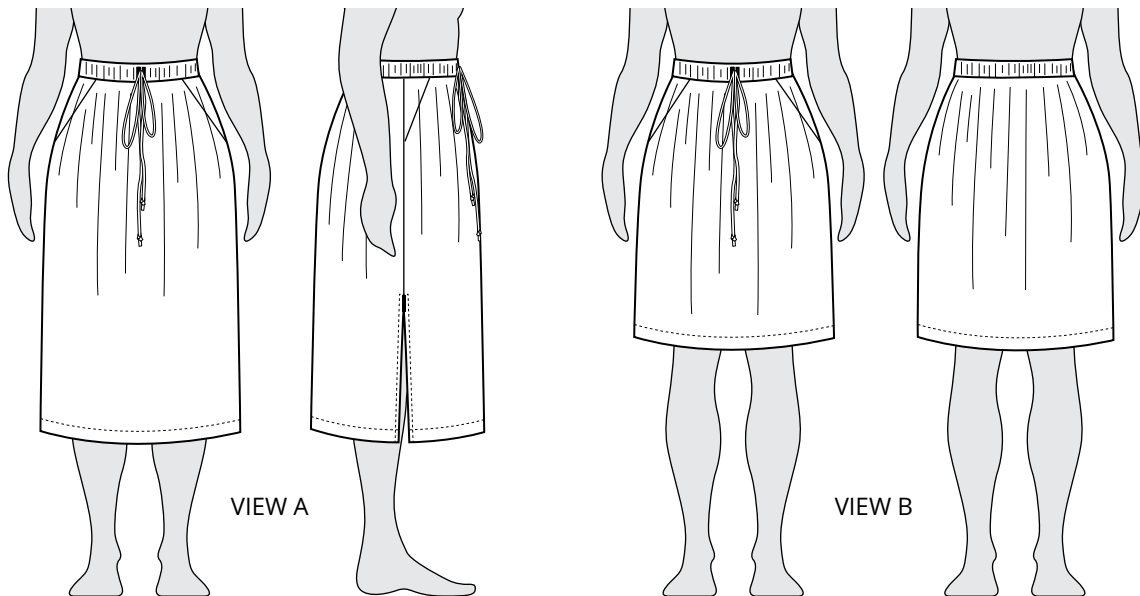
DONOVAN

SKIRT | BEGINNER | SIZES 0 - 34 | #5001



HELEN'S CLOSET

PATTERNS



The Donovan Skirt is a beginner sewing pattern that teaches a variety of sewing techniques and results in a beautiful, everyday garment. This classic elastic waist skirt has the perfect amount of fullness and works in a wide variety of fabrics. It has roomy pockets, an optional drawstring, and two views. View A is a midi-length with a modern side slit and view B is a summery above-the-knee length.

Notions

- Thread
- 2" x 3" (5 cm x 8 cm) piece of fusible interfacing
- 1.5" wide elastic:
 - Sizes 0-10: 28" (71 cm)
 - Sizes 12-20: 34" (86 cm)
 - Sizes 22-34: 45" (114 cm)

Difficulty

Beginner

Sizes

0-34 US

Sewing Skills Learned

- Topstitching
- Understitching
- French seams
- Finishing seams
- Inserting Elastic
- Bartacks

Fabric Recommendations

Light to medium weight woven fabrics with no stretch. Cotton (lawn, poplin, seersucker, shirting), linen, silk crepe de chine, poly crepe, and rayon/viscose challis or poplin work well. Structured fabrics will have more dramatic volume and drapier fabrics will have more fluid movement.



inches

	0	2	4	6	8	10	12	14	16
Waist	24	25	26	27	28	29	30	32	34
Hips	33	34	35	36	37	38.5	40	42	44

	18	20	22	24	26	28	30	32	34
Waist	36	38	40	42	44	46	48	50	52
Hips	46	48	50	52	54	56	58	60	62

centimeters

	0	2	4	6	8	10	12	14	16
Waist	61	63.5	66	68.5	71	73.5	76	81.5	86.5
Hips	84	86.5	89	91.5	94	98	101.5	106.5	112

	18	20	22	24	26	28	30	32	34
Waist	91.5	96.5	101.5	106.5	112	117	122	127	132
Hips	117	122	127	132	137	142	147.5	152.5	157.5

This pattern has been drafted for a 5'6" (168 cm) tall person

Choosing a size

Measure around your waist (where your body naturally bends in the middle) and your hips (around the fullest part of your hip). Consult the chart above. Chances are, your waist and hip measurements fall into two sizes. That is normal! **Choose a size based on your hip measurement.**

	18	20	22	24	26	28	30	32	34
Waist	36	38	40	42	44	46	48	50	52
Hips	46	48	50	52	54	56	58	60	62

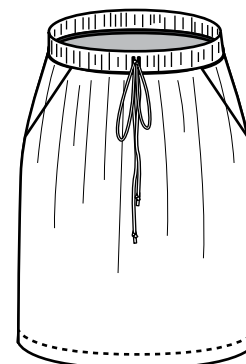
In this example, this person would make a size 20.

Waist tie

The waist tie (drawstring) is optional. It is mainly decorative with an added benefit of cinching the skirt tighter if desired.

It is split into four pattern pieces to make it easier to cut out the pattern and save fabric. If you would prefer to cut one long fabric strip or two fabric strips instead of four, you can!

An alternative to a fabric waist tie is purchasing cord from the fabric store.



inches

	0	2	4	6	8	10	12	14	16
Waist	36	37	39	39	40	41.5	43	45	47
Hips	42	43	44	45	46	47.5	49	51	53
Length (A)	31	31	31	31	31	31	31	31	31
Length (B)	22	22	22	22	22	22	22	22	22

	18	20	22	24	26	28	30	32	34
Waist	49	51.5	54	56	58	60	62	64	66
Hips	55	57.5	60	62	64	66	68	70	72
Length (A)	31	31	31	31	31	31	31	31	31
Length (B)	22	22	22	22	22	22	22	22	22

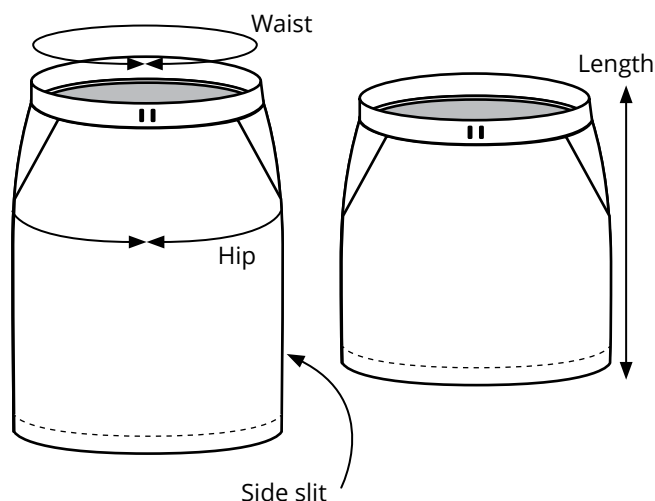
centimeters

	0	2	4	6	8	10	12	14	16
Waist	91.5	94	96.5	99	101.5	105.5	109	114.5	119.5
Hips	106.5	109	112	114.5	114	120.5	129.5	134.5	139.5
Length (A)	79	79	79	79	79	79	79	79	79
Length (B)	56	56	56	56	56	56	56	56	56

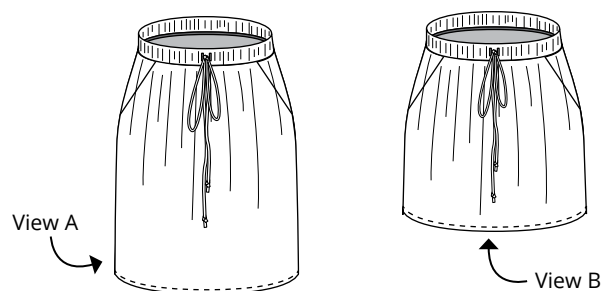
	18	20	22	24	26	28	30	32	34
Waist	124.5	131	137	142	147.5	152.5	157.5	162.5	167.5
Hips	139.5	145	152.5	157.5	162.5	167.5	172.5	178	183
Length (A)	79	79	79	79	79	79	79	79	79
Length (B)	56	56	56	56	56	56	56	56	56

The finished **waist** is measured **before** the elastic is inserted, gathering the skirt at the waist. You can choose how tight you wish to have the elastic and add a drawstring for additional waist cinching. **Length** is measured from the top of the waistband to the hem. **Hip** is measured around the skirt, at the hip level.

The side slit for view A of the Donovan Skirt is high on the leg. You can make this slit any length you prefer.



The waistband and waist tie for this pattern can be cut along the grainline *or* on the cross grain. For some sizes, these pieces are cut on the cross grain to conserve fabric.



View A (midi-length with side slit)

yards

	0	2	4	6	8	10	12	14	16	18	20	22	24	26	28	30	32	34
57" wide	1.6	1.6	1.6	1.6	1.6	1.7	1.7	1.7	1.7	2.4	2.4	2.4	2.4	2.4	2.4	2.4	2.4	2.4
45" wide	2.4	2.4	2.4	2.4	2.4	2.4	2.4	2.4	2.4	2.4	2.4	2.4	2.5	2.5	2.5	2.5	2.6	2.6

meters

	0	2	4	6	8	10	12	14	16	18	20	22	24	26	28	30	34	34
145 cm wide	1.5	1.5	1.5	1.5	1.5	1.5	1.6	1.6	1.6	2.2	2.2	2.2	2.2	2.2	2.2	2.2	2.1	2.1
114 cm wide	2.2	2.2	2.2	2.2	2.2	2.2	2.2	2.2	2.2	2.2	2.2	2.2	2.3	2.3	2.3	2.3	2.4	2.4

View B (above-the-knee length)

yards

	0	2	4	6	8	10	12	14	16	18	20	22	24	26	28	30	32	34
57" wide	1.4	1.4	1.4	1.4	1.4	1.4	1.4	1.4	1.4	1.9	1.9	1.9	2.1	2.1	2.1	2.1	2.1	2.1
45" wide	1.9	1.9	1.9	1.9	1.9	1.9	1.9	1.9	1.9	2.1	2.1	2.1	2.1	2.1	2.1	2.1	2.1	2.1

meters

	0	2	4	6	8	10	12	14	16	18	20	22	24	26	28	30	32	34
145 cm wide	1.3	1.3	1.3	1.3	1.3	1.3	1.3	1.3	1.3	1.7	1.7	1.7	1.9	1.9	1.9	1.9	1.9	1.9
114 cm wide	1.7	1.7	1.7	1.7	1.7	1.7	1.7	1.7	1.7	1.9	1.9	1.9	1.9	1.9	1.9	1.9	1.9	1.9

