

# WINSLOW

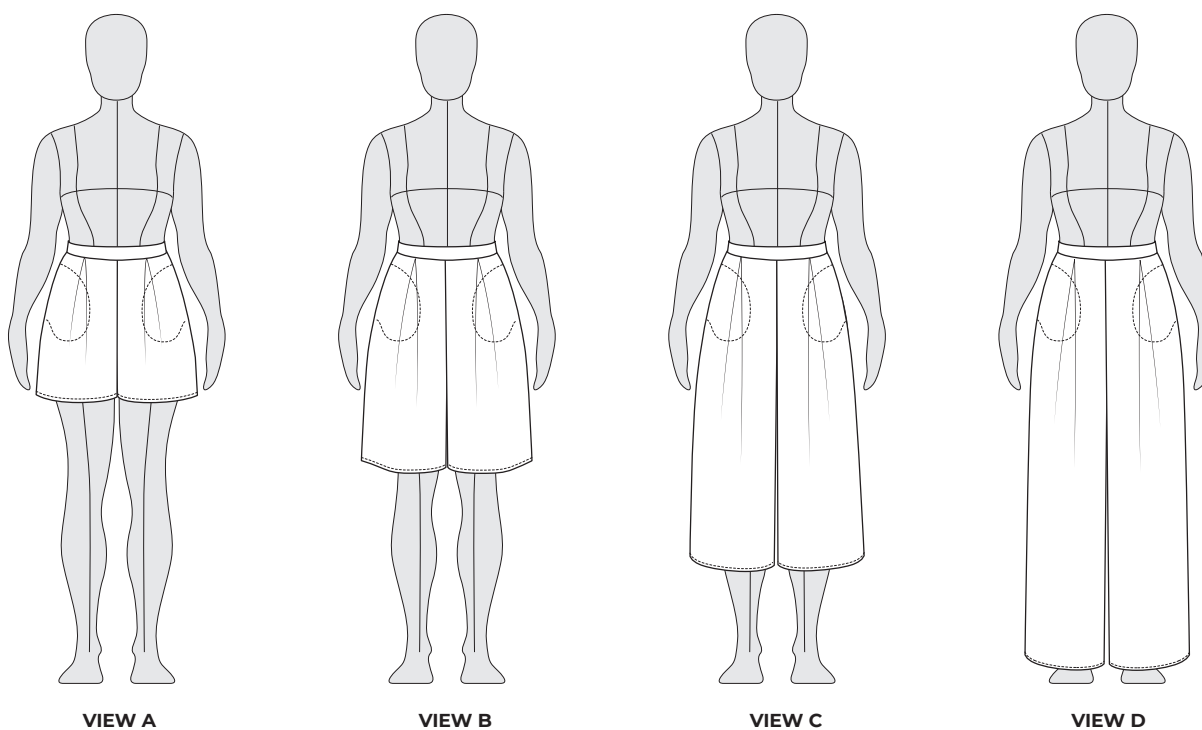
---

CULOTTES | ADVANCED BEGINNER | SIZES 0-34 US | #1001



HELEN'S CLOSET

PATTERNS



The Winslow Culottes are wide-legged pants designed for ultimate comfort and style. This pattern can be made at any length, from shorts to full-length palazzo pants! The design features in-seam pockets, an invisible zipper, a waistband, and inverted box pleats. Make mid-length culottes in tencel twill for a chic, modern look, shorts in cotton lawn for active adventures, or pants in rayon challis for luxurious weekend wear.

### Notions

- 9" (22 cm) zipper
- 55" x 10" (140 cm x 25 cm) lightweight interfacing
- Thread

### Difficulty

Advanced Beginner

### Sizes

0-34 US

### Sewing Skills Learned

- Invisible zipper insertion
- In-seam pockets

### Fabric Recommendations

Light to medium weight woven fabrics with plenty of drape such as rayon challis, viscose poplin, crepe dé chine, lightweight linen, and tencel twill. View A and B work well with both fluid and slightly structured fabrics. For the longer lengths (View C and D), a lighter weight fabric with plenty of drape is strongly recommended.



Size Chart

inches

	0	2	4	6	8	10	12	14	16
<b>Waist</b>	24	25	26	27	28	29	30	32	34
<b>Hips</b>	33	34	35	36	37	38.5	40	42	44

	18	20	22	24	26	28	30	32	34
<b>Waist</b>	36	38	40	42	44	46	48	50	52
<b>Hips</b>	46	48	50	52	54	56	58	60	62

centimeters

	0	2	4	6	8	10	12	14	16
<b>Waist</b>	61	63.5	66	68.5	71	73.5	76	81.5	86.5
<b>Hips</b>	84	86.5	89	91.5	94	98	101.5	106.5	112

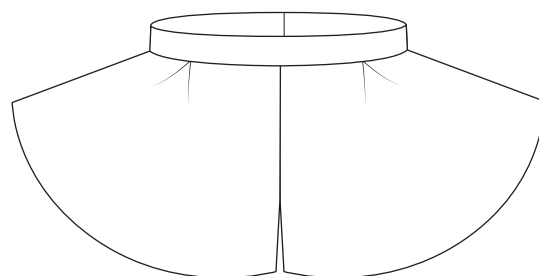
  

	18	20	22	24	26	28	30	32	34
<b>Waist</b>	91.5	96.5	101.5	106.5	112	117	122	127	132
<b>Hips</b>	117	122	127	132	137	142	147.5	152	157

This pattern has been drafted for a 5'6" (168 cm) tall person.

Choosing a size

Due to the deep inverted box pleats (see image to the right), there is plenty of ease at the hips. We recommend choosing a size based on your waist measurement.



Note, that this pattern includes 3/4" (2 cm) of ease at the waist. If you expect you may want more ease at the waist we recommend sizing up.

	18	20	22	24	26	28	30	32	34
<b>Waist</b>	36	38	40	42	44	46	48	50	52
<b>Hips</b>	46	48	50	52	54	56	58	60	62

In this example, this person would make a size 24.



Finished Garment Measurements

inches

	0	2	4	6	8	10	12	14	16
<b>Waist</b>	24.75	25.75	26.75	27.75	28.75	29.75	30.75	32.75	34.75
<b>Front Rise *</b>	12	12.5	12.75	13	13.25	13.5	13.75	14.5	15
<b>Hip</b>	72.75	74.5	76.5	78.5	80.25	82	84	87.5	91

	18	20	22	24	26	28	30	32	34
<b>Waist</b>	36.75	38.75	40.75	42.75	44.75	46.75	48.75	50.75	52.75
<b>Front Rise *</b>	15.5	16	16.5	16.75	17.25	17.5	18.75	18.25	18.5
<b>Hip</b>	94.75	98.5	102	105.5	109	112.75	116.5	120	123.5

centimeters

	0	2	4	6	8	10	12	14	16
<b>Waist</b>	63	65.5	68	70.5	73	75.5	78	83	88.5
<b>Front Rise *</b>	31.5	32	33	33.5	34.5	35	35.5	37	38.5
<b>Hip</b>	185	190	194.5	200	204	208.5	213.5	222.5	231.5

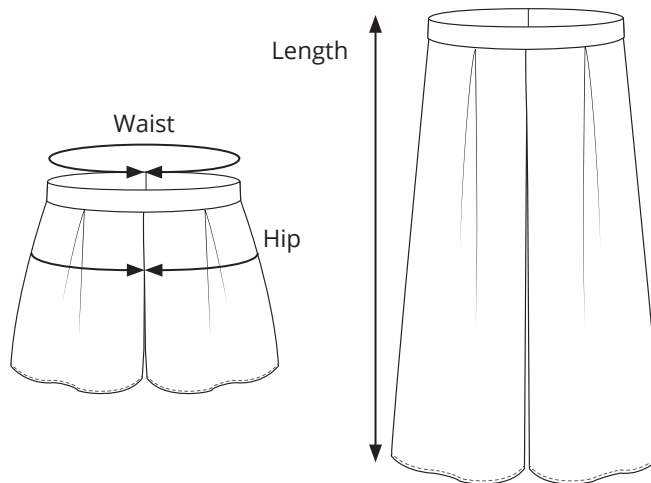
	18	20	22	24	26	28	30	32	34
<b>Waist</b>	93.5	98.5	103.5	108.5	113.5	118.5	124	129	134
<b>Front Rise *</b>	40	41.5	42.5	43.5	44	45	46	46.5	47.5
<b>Hip</b>	240.5	250	259	268	277.5	286.5	295.5	304.5	313.5

\* Front rise measurement includes the waistband.

The length is the same for all sizes. **View A** is 18" (46 cm), **View B** is 22" (56 cm), **View C** is 32" (81.5 cm) and **View D** is 41" (104 cm) long.

The Winslow culottes are designed to be made at any length. Four lengths are provided, based on a 5'6" (167 cm) person. You can add or remove length to suit your personal preference.

The **length** is measured from the top of the waistband to the hem. The **waist** is measured around the top of the waistband. The **hip** is measured around the hip of the garment.



Please allow extra fabric for pattern/print matching with large scale prints. If the required fabric is "n/a", the pattern pieces will not fit on this width of fabric. In this case, select a wider fabric.

**View A (shorts)**

yards

	0	2	4	6	8	10	12	14	16	18	20	22	24	26	28	30	32	34
<b>57" wide</b>	1.4	1.4	1.4	1.4	1.4	1.4	1.4	1.4	1.4	1.4	1.4	1.9	1.9	1.9	2.2	2.2	2.2	2.2
<b>45" wide</b>	2	2	2	2	2	2.2	2.2	2.2	2.2	2.2	2.2	2.5	2.5	n/a	n/a	n/a	n/a	n/a

meters

	0	2	4	6	8	10	12	14	16	18	20	22	24	26	28	30	32	34
<b>150 cm wide</b>	1.3	1.3	1.3	1.3	1.3	1.3	1.3	1.3	1.3	1.3	1.3	1.7	1.7	1.7	2	2	2	2
<b>115 cm wide</b>	1.8	1.8	1.8	1.8	1.8	2	2	2	2	2	2	2.3	2.3	n/a	n/a	n/a	n/a	n/a

**View B (above-the-knee)**

yards

	0	2	4	6	8	10	12	14	16	18	20	22	24	26	28	30	32	34
<b>57" wide</b>	1.6	1.6	1.6	1.6	1.6	1.6	1.6	1.6	1.6	1.6	1.6	2.2	2.2	2.2	2.4	2.4	2.4	2.4
<b>45" wide</b>	2.2	2.2	2.2	2.2	2.2	2.5	2.5	2.5	2.5	2.6	2.6	3	3	n/a	n/a	n/a	n/a	n/a

meters

	0	2	4	6	8	10	12	14	16	18	20	22	24	26	28	30	32	34
<b>150 cm wide</b>	1.5	1.5	1.5	1.5	1.5	1.5	1.5	1.5	1.5	1.5	1.5	2	2	2	2.2	2.2	2.2	2.2
<b>115 cm wide</b>	2	2	2	2	2	2.3	2.3	2.3	2.3	2.4	2.4	2.7	2.7	n/a	n/a	n/a	n/a	n/a

**View C (culottes)**

yards

	0	2	4	6	8	10	12	14	16	18	20	22	24	26	28	30	32	34
<b>57" wide</b>	2.2	2.2	2.2	2.2	2.2	2.2	2.2	2.2	2.2	2.2	2.2	2.8	2.8	2.8	3.5	3.5	3.5	3.5
<b>45" wide</b>	3.3	3.3	3.3	3.3	3.5	3.5	3.5	3.5	3.7	3.7	3.7	4.2	4.2	n/a	n/a	n/a	n/a	n/a

meters

	0	2	4	6	8	10	12	14	16	18	20	22	24	26	28	30	32	34
<b>150 cm wide</b>	2	2	2	2	2	2	2	2	2	2	2	2.6	2.6	2.6	3.2	3.2	3.2	3.2
<b>115 cm wide</b>	3	3	3	3	3	3.2	3.2	3.2	3.4	3.4	3.4	3.8	3.8	n/a	n/a	n/a	n/a	n/a

**View D (long pants)**

yards

	0	2	4	6	8	10	12	14	16	18	20	22	24	26	28	30	32	34
<b>57" wide</b>	2.7	2.7	2.7	2.7	2.7	2.7	2.7	2.7	2.7	2.7	2.7	3.6	3.6	3.6	4.4	4.4	4.4	4.4
<b>45" wide</b>	3.9	3.9	3.9	3.9	3.9	4.4	4.4	4.4	4.4	4.4	4.7	5	5	n/a	n/a	n/a	n/a	n/a

meters

	0	2	4	6	8	10	12	14	16	18	20	22	24	26	28	30	32	34
<b>145 cm wide</b>	2.5	2.5	2.5	2.5	2.5	2.5	2.5	2.5	2.5	2.5	2.5	3.3	3.3	3.3	4	4	4	4
<b>115 cm wide</b>	3.6	3.6	3.6	3.6	3.6	4	4	4	4	4.3	4.3	4.5	4.5	n/a	n/a	n/a	n/a	n/a

