

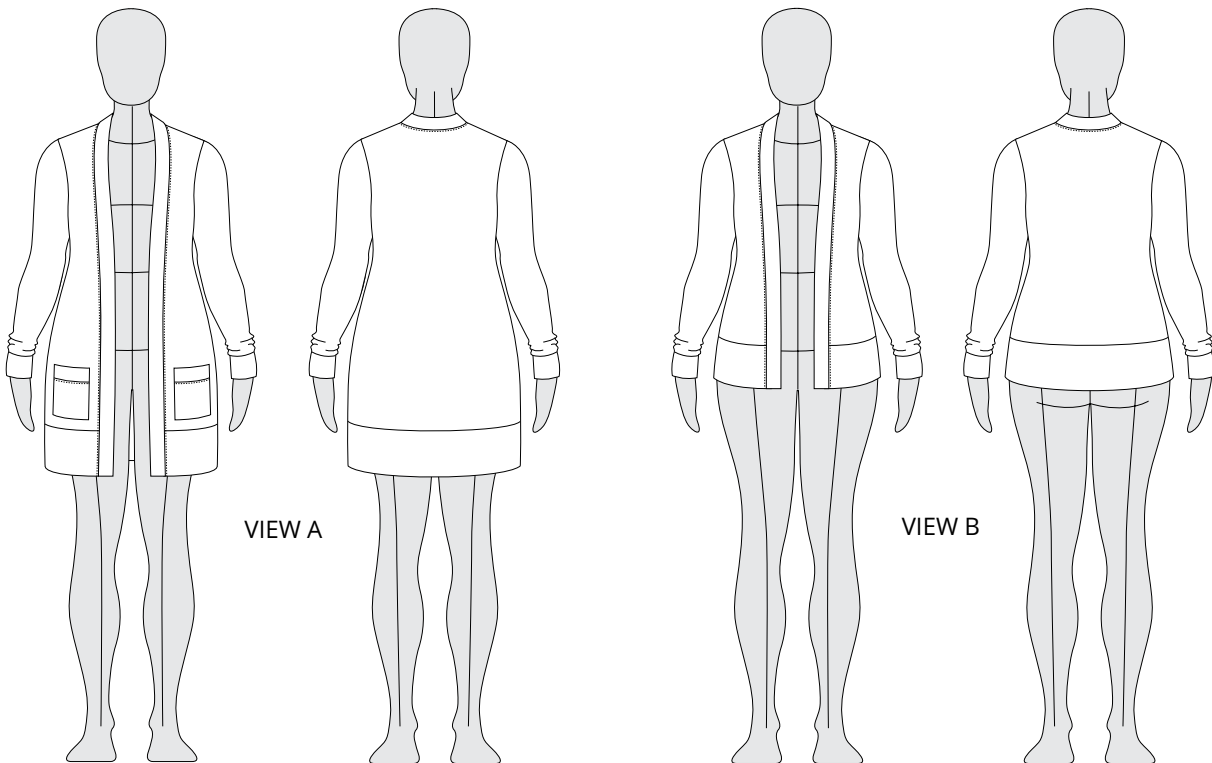
BLACKWOOD

CARDIGAN | ADVANCED BEGINNER | SIZES 0 - 34 | #2001



HELEN'S CLOSET

PATTERNS



The Blackwood Cardigan is a cozy and versatile addition to your wardrobe. Designed with layering in mind, it has minimal excess fabric in the front and a close fit around the neck and shoulders. Its fitted shape and extra long sleeves make it perfect for wearing under jackets and vests, while also looking stylish over tank tops and dresses. View B ends at the hips, while View A extends down to the mid-thigh and includes patch pockets at hand level. The Blackwood is intended to be worn open and is not designed to close at the front.

Notions

- Thread
- 10" (25 cm) clear elastic, twill tape, or other stabilizer for the shoulder seam

Difficulty

Advanced Beginner

Sizes

0-34 US

Sewing Skills

Learned

- Sewing with knit fabric

Fabric Recommendations

Light to medium weight knit fabrics with at least 40% stretch widthwise and 20% stretch lengthwise. Try a cozy sweater knit or french terry for a warm layer or make it in jersey for a lightweight cover-up.



Two PDF patterns are provided with different size charts. The first is range 0-22 based on a B-cup block. The second is range 12-34 based on a D-cup block. There is an overlap from sizes 12-22 where you can choose which size range you would like to use.

B-Cup Size Range: (0-22)

inches

| | 0 | 2 | 4 | 6 | 8 | 10 | 12 | 14 | 16 | 18 | 20 | 22 |
|------------------------|----|----|----|----|----|------|----|----|----|----|----|----|
| High Bust/Chest | 29 | 30 | 31 | 32 | 33 | 34.5 | 36 | 38 | 40 | 42 | 44 | 46 |
| Full Bust/Chest | 31 | 32 | 33 | 34 | 35 | 36.5 | 38 | 40 | 42 | 44 | 46 | 48 |
| Waist | 24 | 25 | 26 | 27 | 28 | 29 | 30 | 32 | 34 | 36 | 38 | 40 |
| Hips | 33 | 34 | 35 | 36 | 37 | 38.5 | 40 | 42 | 44 | 46 | 48 | 50 |

centimeters

| | 0 | 2 | 4 | 6 | 8 | 10 | 12 | 14 | 16 | 18 | 20 | 22 |
|------------------------|------|------|------|------|----|------|-------|-------|-------|-------|------|-------|
| High Bust/Chest | 73.5 | 76 | 78.5 | 81.5 | 84 | 87.5 | 91.5 | 96.5 | 101.5 | 106.5 | 112 | 117 |
| Full Bust/Chest | 78.5 | 81.5 | 84 | 86.5 | 89 | 92.5 | 96.5 | 101.5 | 106.5 | 117 | 117 | 122 |
| Waist | 61 | 63.5 | 66 | 68.5 | 71 | 73.5 | 76 | 81.5 | 86.5 | 91.5 | 96.5 | 101.5 |
| Hips | 84 | 86.5 | 89 | 91.5 | 94 | 98 | 101.5 | 106.5 | 112 | 117 | 122 | 127 |

D-Cup Size Range (12-30)

inches

| | 12 | 14 | 16 | 18 | 20 | 22 | 24 | 26 | 28 | 30 | 32 | 34 |
|------------------------|----|----|----|----|----|----|----|----|----|----|----|----|
| High Bust/Chest | 36 | 38 | 40 | 42 | 44 | 46 | 48 | 50 | 52 | 54 | 56 | 58 |
| Full Bust/Chest | 40 | 42 | 44 | 46 | 48 | 50 | 52 | 54 | 56 | 58 | 60 | 62 |
| Waist | 30 | 32 | 34 | 36 | 38 | 40 | 42 | 44 | 46 | 48 | 50 | 52 |
| Hips | 40 | 42 | 44 | 46 | 48 | 50 | 42 | 54 | 56 | 58 | 60 | 62 |

centimeters

| | 12 | 14 | 16 | 18 | 20 | 22 | 24 | 26 | 28 | 30 | 32 | 34 |
|------------------------|-------|-------|-------|-------|------|-------|-------|-----|-----|-------|-------|-------|
| High Bust/Chest | 91.5 | 96.5 | 101.5 | 106.5 | 112 | 117 | 122 | 127 | 132 | 137 | 142 | 147.5 |
| Full Bust/Chest | 101.5 | 106.5 | 112 | 117 | 122 | 127 | 132 | 137 | 142 | 147.5 | 152.5 | 157.5 |
| Waist | 76 | 81.5 | 86.5 | 91.5 | 96.5 | 101.5 | 106.5 | 112 | 117 | 122 | 127 | 132 |
| Hips | 101.5 | 106.5 | 112 | 117 | 122 | 127 | 132 | 137 | 142 | 147.5 | 152.5 | 157.5 |

This pattern has been drafted for a 5'6" tall person



B-Cup Finished Measurements

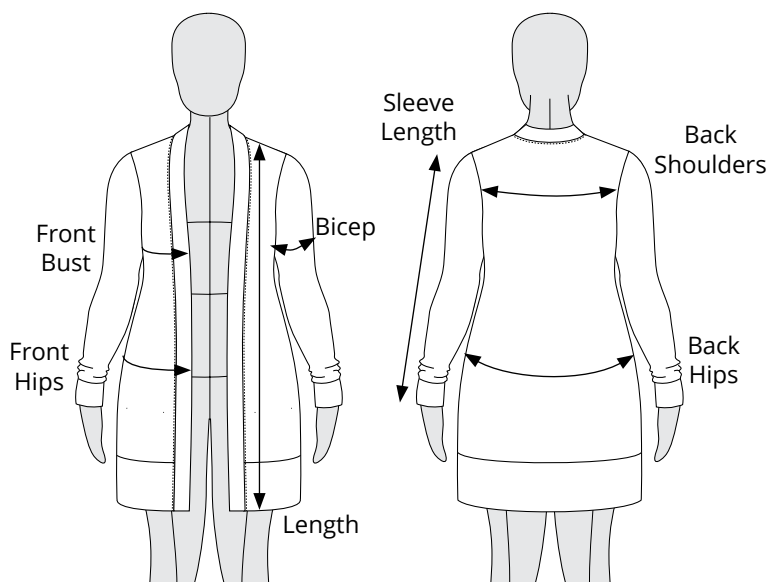
| | 0 | 2 | 4 | 6 | 8 | 10 | 12 | 14 | 16 | 18 | 20 | 22 |
|-------------------------|-------|-------|-------|-------|------|-------|------|-------|-------|-------|-------|-------|
| Front Bust/Chest | 6.25 | 6.5 | 7 | 7.5 | 7.75 | 8.25 | 8.75 | 9 | 9.5 | 10 | 10.5 | 11 |
| Front Hips | 7.5 | 7.75 | 8.25 | 8.75 | 9.25 | 9.75 | 10 | 10.5 | 11 | 11.5 | 12 | 12.5 |
| Back Shoulders | 11.5 | 11.75 | 12.25 | 12.5 | 13 | 13.5 | 14 | 14.25 | 14.75 | 15.25 | 15.75 | 16.25 |
| Back Hips | 14.75 | 16 | 17 | 18 | 19 | 20 | 21 | 22 | 23 | 24 | 24.5 | 25 |
| Length (A) | 32 | 32 | 32.25 | 32.5 | 32.5 | 32.75 | 33 | 33 | 33.25 | 33.5 | 33.5 | 33.75 |
| Length (B) | 24 | 24 | 24.25 | 24.5 | 24.5 | 24.75 | 25 | 25 | 25.25 | 25.5 | 25.5 | 25.75 |
| Sleeve Length | 25.75 | 26 | 26.25 | 26.5 | 26.5 | 26.75 | 27 | 27 | 27.25 | 27.5 | 27.5 | 27.75 |
| Bicep | 11.5 | 12 | 12.25 | 12.75 | 13 | 13.5 | 14 | 14.5 | 15 | 15.5 | 16 | 16.5 |

D-Cup Finished Measurements

| | 12 | 14 | 16 | 18 | 20 | 22 | 24 | 26 | 28 | 30 | 32 | 34 |
|-------------------------|------|-------|-------|-------|-------|-------|-------|-------|-------|-------|-------|-------|
| Front Bust/Chest | 9 | 9.5 | 10 | 10.5 | 11 | 11.5 | 12 | 12.5 | 13 | 14 | 14.5 | 15 |
| Front Hips | 10 | 10.5 | 11 | 11.5 | 12 | 12.5 | 13 | 13.5 | 14 | 14.5 | 15 | 15.5 |
| Back Shoulders | 14 | 14.25 | 14.75 | 15.25 | 15.75 | 16.25 | 16.75 | 17.25 | 17.75 | 18.25 | 18.75 | 19.25 |
| Back Hips | 21 | 22 | 23 | 24 | 24.5 | 25 | 26 | 27 | 28 | 29 | 30 | 31 |
| Length (A) | 33 | 33 | 33.25 | 33.5 | 33.5 | 33.5 | 33.75 | 33.75 | 34 | 34 | 34.25 | 34.25 |
| Length (B) | 25 | 25 | 25.25 | 25.5 | 25.5 | 25.5 | 25.75 | 25.75 | 26 | 26 | 26.25 | 26.25 |
| Sleeve Length | 27 | 27 | 27.25 | 27.5 | 27.5 | 27.5 | 27.75 | 27.75 | 28 | 28 | 28.25 | 28.25 |
| Bicep | 14.5 | 15 | 15.25 | 15.75 | 16 | 16.5 | 17 | 17.5 | 18 | 18.5 | 19 | 19.5 |

Because the Blackwood Cardigan is designed to be worn open, traditional finished garment measurements for the bust/chest, waist and hips are not included

Front bust/chest and **front hips** are measured from the side seam to the edge of the front band across the full bust and hip respectively. **Length** is measured from the middle of the shoulder seam to the bottom of the hem band on the front body. **Back width** is measured from mid-armscye to mid-armscye across the shoulders and side seam to side seam at the hip. **Sleeve length** is measured from the top of the sleeve to the end of the cuff. **Bicep** is the circumference of the sleeve at the bicep.



B-Cup Finished Measurements

| | 0 | 2 | 4 | 6 | 8 | 10 | 12 | 14 | 16 | 18 | 20 | 22 |
|-------------------------|------|------|------|------|------|------|------|------|------|------|------|------|
| Front Bust/Chest | 16 | 16.5 | 18 | 19 | 19.5 | 21 | 22 | 23 | 24 | 25.5 | 26.5 | 28 |
| Front Hips | 19 | 19.5 | 21 | 22.5 | 23.5 | 25 | 25.5 | 26.5 | 28 | 29 | 30.5 | 32 |
| Back Shoulders | 29 | 30 | 31 | 32 | 33 | 34.5 | 35.5 | 35 | 37.5 | 38.5 | 40 | 41.5 |
| Back Hips | 37.5 | 40.5 | 43 | 45.5 | 48.5 | 51 | 53.5 | 56 | 58.5 | 61 | 62 | 63.5 |
| Length (A) | 81.5 | 81.5 | 82 | 82.5 | 82.5 | 83 | 84 | 84 | 84.5 | 85 | 85 | 85.5 |
| Length (B) | 61 | 61 | 61.5 | 62 | 62 | 63 | 63.5 | 63.5 | 64 | 65 | 65 | 65.5 |
| Sleeve Length | 65.5 | 66 | 66.5 | 67.5 | 67.5 | 68 | 68.5 | 68.5 | 69 | 70 | 70 | 70.5 |
| Bicep | 29 | 30.5 | 31 | 32.5 | 33 | 34.5 | 35.5 | 37 | 38 | 39.5 | 40.5 | 42 |

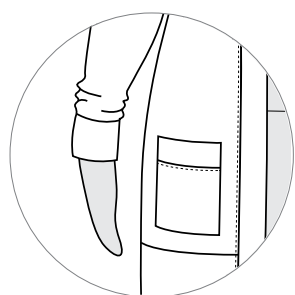
D-Cup Finished Measurements

| | 12 | 14 | 16 | 18 | 20 | 22 | 24 | 26 | 28 | 30 | 32 | 34 |
|-------------------------|------|------|------|------|------|------|------|------|------|------|------|------|
| Front Bust/Chest | 23 | 24 | 25.5 | 26.5 | 28 | 29 | 30.5 | 32 | 33 | 35.5 | 36.5 | 38 |
| Front Hips | 26.5 | 26.5 | 28 | 29 | 30.5 | 32 | 33 | 34.5 | 35.5 | 37 | 38 | 39.5 |
| Back Shoulders | 35.5 | 36 | 37.5 | 38.5 | 40 | 41.5 | 42.5 | 44 | 45 | 45.5 | 47.5 | 49 |
| Back Hips | 53.5 | 56 | 58.5 | 61 | 62 | 63.5 | 66 | 68.5 | 71 | 73.5 | 76 | 79 |
| Length (A) | 84 | 84 | 84.5 | 85 | 85 | 85 | 85.5 | 85.5 | 86.5 | 86.5 | 87 | 87 |
| Length (B) | 63.5 | 63.5 | 64 | 65 | 65 | 65 | 65.5 | 65.5 | 66 | 66 | 67 | 67 |
| Sleeve Length | 68.5 | 68.5 | 69 | 70 | 70 | 70 | 70.5 | 70.5 | 71 | 71 | 71.5 | 71.5 |
| Bicep | 37 | 38 | 38.5 | 40 | 40.5 | 42 | 43 | 44.5 | 45.5 | 47 | 48 | 49.5 |

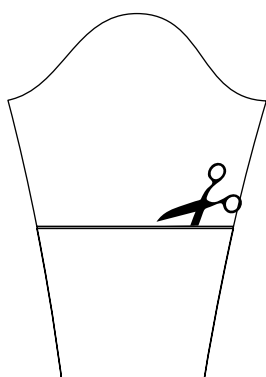
Blackwood Cardigan is designed to be worn open, for this reason the traditional finished garment measurements for the bust/chest, waist and hips are not included

How to Shorten The Sleeves

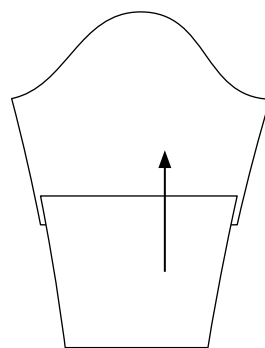
The Blackwood sleeves are extra long for maximum coziness! Not your style? No problem! You can shorten the sleeves to get a classic look. Consult the finished measurement charts above to decide how much to shorten.



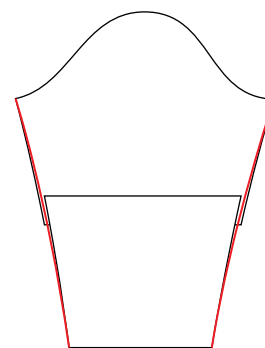
The Blackwood sleeves bunch at the wrist and keep hands warm.



1. Cut at the lengthen/shorten line.



2. Shorten desired amount.



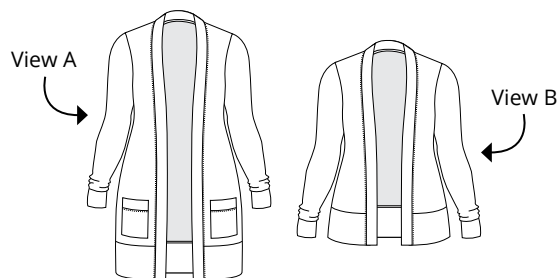
3. True up the sides.



The fabric requirements are provided for 59" (150 cm) wide fabric.

When using fabric narrower than that, the bottom band pattern piece (5/7) for sizes 32-34 will not fit onto it. In this case please select a wider fabric or plan to piece the bottom band together.

See the instruction booklet for more details.



View A (longer)

yards

| | 0 | 2 | 4 | 6 | 8 | 10 | 12 | 14 | 16 | 18 | 20 | 22 | 24 | 26 | 28 | 30 | 32 | 34 |
|-----------------|-----|-----|-----|-----|-----|-----|-----|-----|-----|-----|-----|-----|-----|-----|-----|-----|-----|-----|
| 59" wide | 1.9 | 1.9 | 1.9 | 1.9 | 2 | 2 | 2 | 2 | 2 | 2 | 2.2 | 2.2 | 2.5 | 2.5 | 2.5 | 2.5 | 3 | 3 |
| 45" wide | 2 | 2 | 2 | 2 | 2.4 | 2.4 | 2.4 | 2.8 | 2.8 | 2.8 | n/a | n/a | n/a | n/a | n/a | n/a | n/a | n/a |

meters

| | 0 | 2 | 4 | 6 | 8 | 10 | 12 | 14 | 16 | 18 | 20 | 22 | 24 | 26 | 28 | 30 | 34 | 34 |
|--------------------|-----|-----|-----|-----|-----|-----|-----|-----|-----|-----|-----|-----|-----|-----|-----|-----|-----|-----|
| 150 cm wide | 1.7 | 1.7 | 1.7 | 1.7 | 1.8 | 1.8 | 1.8 | 1.8 | 1.8 | 1.8 | 2 | 2 | 2 | 2.3 | 2.3 | 2.3 | 2.7 | 2.7 |
| 114 cm wide | 1.8 | 1.8 | 1.8 | 1.8 | 2.2 | 2.2 | 2.2 | 2.6 | 2.6 | 2.6 | n/a | n/a | n/a | n/a | n/a | n/a | n/a | n/a |

View B (shorter)

yards

| | 0 | 2 | 4 | 6 | 8 | 10 | 12 | 14 | 16 | 18 | 20 | 22 | 24 | 26 | 28 | 30 | 32 | 34 |
|-----------------|-----|-----|-----|-----|-----|-----|-----|-----|-----|-----|-----|-----|-----|-----|-----|-----|-----|-----|
| 59" wide | 1.7 | 1.7 | 1.7 | 1.7 | 1.7 | 1.7 | 1.7 | 1.7 | 1.7 | 1.7 | 1.9 | 1.9 | 2 | 2 | 2.1 | 2.1 | 2.5 | 2.5 |
| 45" wide | 1.8 | 1.8 | 1.8 | 1.8 | 2 | 2 | 2 | 2.1 | 2.1 | 2.1 | 2.5 | 2.5 | n/a | n/a | n/a | n/a | n/a | n/a |

meters

| | 0 | 2 | 4 | 6 | 8 | 10 | 12 | 14 | 16 | 18 | 20 | 22 | 24 | 26 | 28 | 30 | 32 | 34 |
|--------------------|-----|-----|-----|-----|-----|-----|-----|-----|-----|-----|-----|-----|-----|-----|-----|-----|-----|-----|
| 150 cm wide | 1.5 | 1.5 | 1.5 | 1.5 | 1.5 | 1.5 | 1.5 | 1.5 | 1.5 | 1.5 | 1.7 | 1.7 | 1.8 | 1.8 | 1.9 | 1.9 | 2.3 | 2.3 |
| 114 cm wide | 1.6 | 1.6 | 1.6 | 1.6 | 1.8 | 1.8 | 1.8 | 1.9 | 1.9 | 1.9 | 2.3 | 2.3 | n/a | n/a | n/a | n/a | n/a | n/a |

