

# YANTA

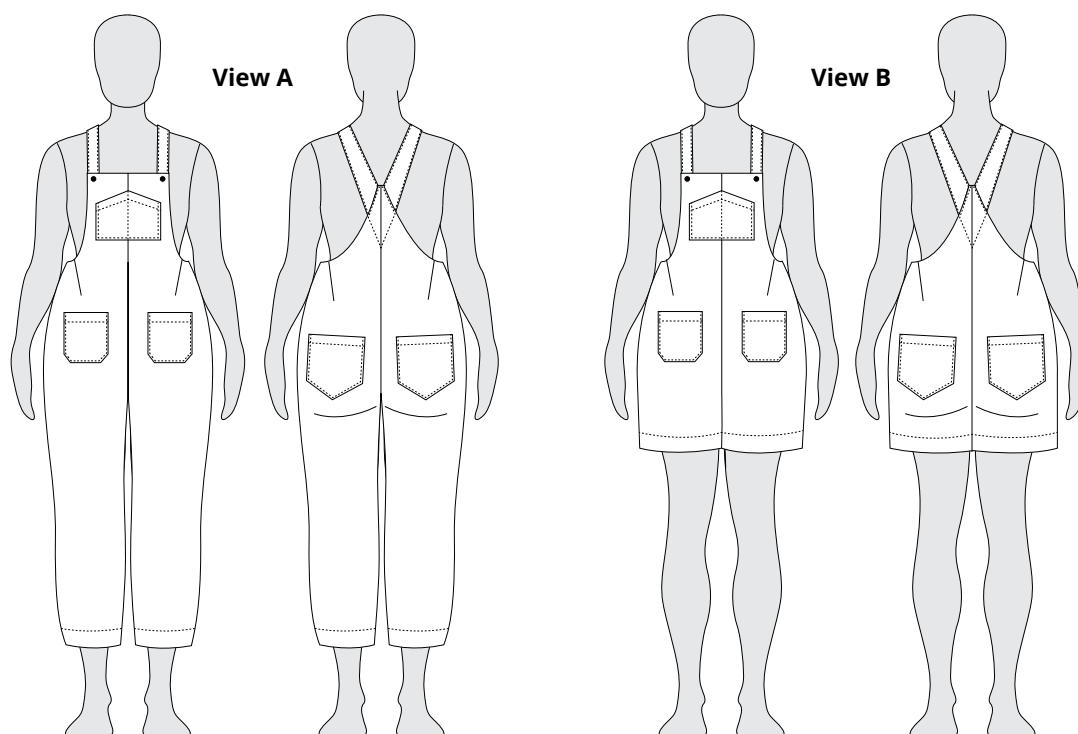
---

OVERALLS | INTERMEDIATE | SIZES 0 - 30 | #7001



HELEN'S CLOSET

PATTERNS



The Yanta Overalls are laid back, artist-style overalls with a comfortable fit through the waist, hips and legs. These overalls have classic features like a v-shaped back and a pointed chest pocket. The Yanta straps are secured using buttons. Make your Yanta Overalls cropped pants or summery shorts. Both views have front and back patch pockets. Yanta is comfortable, modern, and fun to sew!

#### Notions

- Thread
- One 5" (13 cm) invisible zipper (*optional*)
- Two 3/4" (2 cm) buttons
- 24" x 20" (60 cm x 50 cm) lightweight interfacing

#### Sizes

0-30 US

#### Difficulty

Intermediate

#### Sewing Skills Learned

- Invisible zipper insertion
- Darts
- Facing finish

#### Fabric Recommendations

Medium to heavy weight woven fabrics such as cotton twill, denim (up to 10oz), linen, corduroy, and canvas. Crisp lightweight fabrics such as cotton and lightweight linen can also be used for warm-weather overalls. Use more drapery fabrics such as tencel twill, wool crepe, or linen/viscose slub if you want to experiment with a softer, less structured look.



inches

	0	2	4	6	8	10	12	14
<b>High Bust</b>	29	30	31	32	33	34.5	36	38
<b>Full Bust</b>	31	32	33	34	35	36.5	38	40
<b>Waist</b>	24	25	26	27	28	29	30	32
<b>Hips</b>	33	34	35	36	37	38.5	40	42

	16	18	20	22	24	26	28	30
<b>High Bust</b>	40	42	44	46	48	50	52	54
<b>Full Bust</b>	42	44	46	48	50	52	54	56
<b>Waist</b>	34	36	38	40	42	44	46	48
<b>Hips</b>	44	46	48	50	52	54	56	58

centimeters

	0	2	4	6	8	10	12	14
<b>High Bust</b>	73.5	76	78.5	81.5	84	87.5	91.5	96.5
<b>Full Bust</b>	78.5	81.5	84	86.5	89	92.5	96.5	101.5
<b>Waist</b>	61	63.5	66	68.5	71	73.5	76	81.5
<b>Hips</b>	84	86.5	89	91.5	94	98	101.5	106.5

	16	18	20	22	24	26	28	30
<b>High Bust</b>	101.5	106.5	112	117	122	127	132	137
<b>Full Bust</b>	106.5	112	117	122	127	132	137	142
<b>Waist</b>	86.5	91.5	96.5	101.5	106.5	112	117	122
<b>Hips</b>	112	117	122	127	132	137	142	147.5

This pattern has been drafted for a 5'6" tall person with a B-cup bust.



inches

	0	2	4	6	8	10	12	14	16	18	20	22	24	26	28	30
● <b>Front Bib Width</b>	8.5	8.75	9	9.25	9.5	9.75	10.5	11	11.5	12	12.5	13	13.5	14	14.5	15
■ <b>Waist</b>	32.5	33.5	34.5	35.5	36.5	38	40	42	44	45.5	47.5	49.5	51.5	53.5	55.5	57.5
■ <b>Hips</b>	38	38.75	39.5	40.5	41.5	43	44.5	46	48	50	52	54	56	58	60	62
▲ <b>Length Pants (A)</b>	45.5	45.75	46	46.25	46.75	47	47.5	48	48.5	49	49.5	50	50.5	51	51.5	52
▲ <b>Length Shorts (B)</b>	25.5	25.75	26	26.25	26.5	26.75	27	27.25	27.75	28	28.25	28.75	29	29.25	29.75	30
▲ <b>Inseam Pants (A)</b>	25	25	25	25	25	25	25	25	25	25	25	25	25	25	25	25
▲ <b>Inseam Shorts (B)</b>	4.25	4.3	4.35	4.4	4.45	4.5	4.55	4.6	4.65	4.7	4.75	4.8	4.85	4.9	4.95	5

centimeters

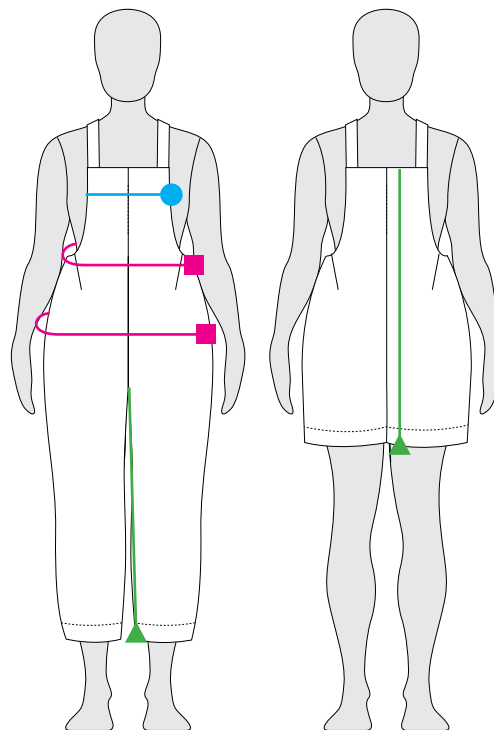
	0	2	4	6	8	10	12	14	16	18	20	22	24	26	28	30
● <b>Front Bib Width</b>	21.5	22	23	23.5	24	25	26.5	28	29	30.5	32	33	34.5	35.5	37	38
■ <b>Waist</b>	82.5	85	87.5	90	92.5	96.5	101.5	106.5	112	115.5	120.5	125.5	131	136	141	146
■ <b>Hips</b>	96.5	98.5	100.5	103	105.5	109	113	117	122	127	132	137	142	147.5	152.5	157.5
▲ <b>Length Pants (A)</b>	115.5	116	117	117.5	118.5	119.5	120.5	122	123	124.5	125.5	127	128.5	129.5	131	132
▲ <b>Length Shorts (B)</b>	65	65.5	66	66.5	67.5	68	68.5	69	70.5	71	72	73	73.5	74.5	75.5	76
▲ <b>Inseam Pants (A)</b>	63.5	63.5	63.5	63.5	63.5	63.5	63.5	63.5	63.5	63.5	63.5	63.5	63.5	63.5	63.5	63.5
▲ <b>Inseam Shorts (B)</b>	11	11	11	11	11.5	11.5	11.5	11.5	12	12	12	12	12.5	12.5	12.5	12.5

Finished bust circumference is not stated because the overalls are open on the sides.

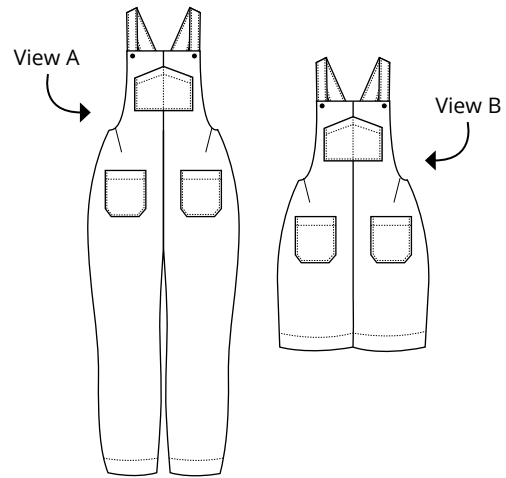
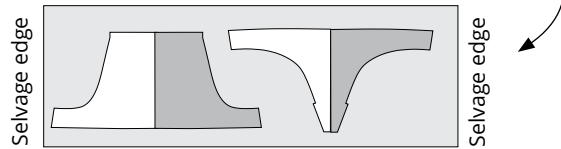
● Bib width is measured from edge to edge across the fullest part of the bust.

▲ Length is measured from the top of the bib to the bottom of the hem band on the front body and from the crotch down to the hem on the inseam.

■ Waist and hips are measured around the body at the waist and hips.



If you wish to cut the facings out of a lighter-weight fabric, you will need 0.5 meters/yards.



**View A (pants view)**

yards

	0	2	4	6	8	10	12	14	16	18	20	22	24	26	28	30
<b>57" wide</b>	2.3	2.3	2.3	2.4	2.5	2.7	2.7	2.7	2.8	2.8	2.8	3.1	3.3	3.3	3.3	3.3
<b>45" wide</b>	2.8	2.8	3	3	3.1	3.1	3.5	3.5	3.5	3.7	3.7	3.7	3.8	3.9	4.2	4.4

meters

	0	2	4	6	8	10	12	14	16	18	20	22	24	26	28	30
<b>150 cm wide</b>	2.1	2.1	2.1	2.2	2.3	2.5	2.5	2.5	2.6	2.6	2.6	2.8	3	3	3	3
<b>115 cm wide</b>	2.6	2.6	2.7	2.7	2.8	2.8	3.2	3.2	3.2	3.4	3.4	3.4	3.5	3.6	3.8	4

**View B (shorts view)**

yards

	0	2	4	6	8	10	12	14	16	18	20	22	24	26	28	30
<b>57" wide</b>	1.7	1.7	1.7	1.7	2	2	2.2	2.2	2.3	2.3	2.3	2.3	2.5	2.5	2.5	2.5
<b>45" wide</b>	2.1	2.2	2.4	2.3	2.3	2.4	2.5	2.5	2.5	2.5	2.6	2.6	2.6	2.6	3.4	3.4

meters

	0	2	4	6	8	10	12	14	16	18	20	22	24	26	28	30
<b>150 cm wide</b>	1.6	1.6	1.6	1.6	1.8	1.8	2	2	2.1	2.1	2.1	2.1	2.3	2.3	2.3	2.3
<b>115 cm wide</b>	1.9	2	2.2	2.1	2.1	2.2	2.3	2.3	2.3	2.3	2.4	2.4	2.4	2.4	3.1	3.1

